

# Audo



UPHOLSTERY

JANUARY 2026, EU

AUDO UPHOLSTERY PROGRAMME  
*Leather*

The Audo upholstery programme shows an overview of our textile and leather standard programme. All textile and leather collections are available in all colours.

Please note that the colour references are only intended as a guide. For further information please see manufacturer websites, or contact your local Audo sales representative.

Selection of textiles or leather outside of our upholstery programme, is subject to final testing and approval. Additional deliverytime may also occur.

SORENSENLEATHER.COM  
NEVOTEX.COM  
CA-MO.COM  
SKANDILOCK.COM



*Leather Price Category 0*



A corrected leather with a printed surface, Sierra features a uniform appearance that requires minimal maintenance. Ideal for high-traffic areas, the long-lasting material is manufactured without environmentally harmful substances like PCP and CFC. Compliant with the REACH declaration, it adheres to all standards and limits for chrome VI.

PRICE CATEGORY  
0

MANUFACTURER  
Camo

MATERIALS  
Corrected leather

THICKNESS  
0.9 – 1.1 mm

MATERIALS  
100 % Corrected Leather

LIGHTFASTNESS  
≥4 (ISO 1-8)

TEARING STRENGTH  
≥20 N

FLEXING RESISTANCE  
50.000 cycles

C&M (BS5852-0/1)  
Yes

CAL 117  
Yes

CRIB 5 (BS5852-5)  
No



1611 STONE



0441 ARMY



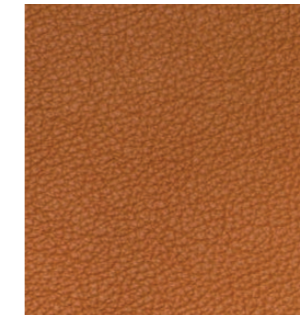
1058 OCEAN BLUE



1279 HAZE



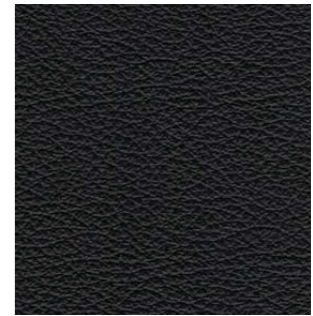
1053 TOFFEE



1513 KELATO WHISKY



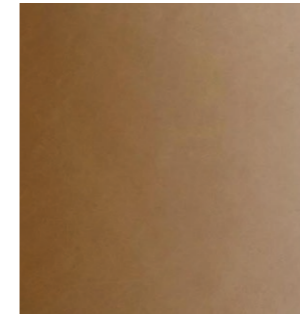
1015 DARK BROWN



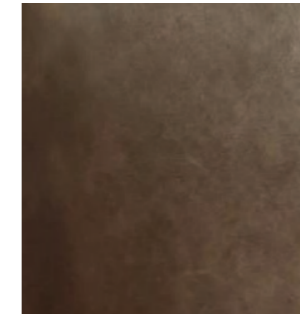
1001 BLACK

# *Leather Price Category 1*

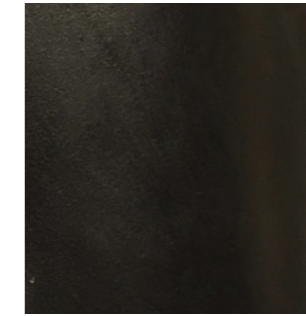
This chrome- and vacuum-tanned, full-grain aniline leather has a waxed surface for an exceptionally soft touch and a glossy finish that highlights its natural texture. Becoming more comfortable over time, it provides a supportive and cosy seating experience and develops a distinctive patina that adds character and uniqueness to each piece of furniture.



0250 COGNAC



0329 BROWN



0842 BLACK

---

PRICE CATEGORY  
1

---

MANUFACTURER  
Nevotex

---

MATERIALS  
100 % Aniline Leather

---

LIGHTFASTNESS  
3 (ISO 1-8)

---

TEARING STRENGTH  
≥20 N

---

FLEXING RESISTANCE  
30.000 cycles

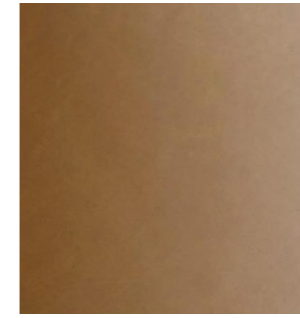
---

CAL 117  
Yes

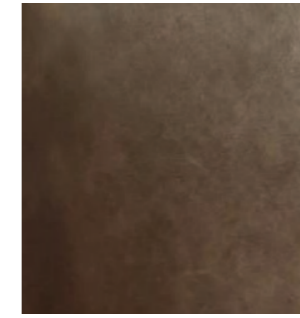
---

CRIB 5 (BS5852-5)  
No

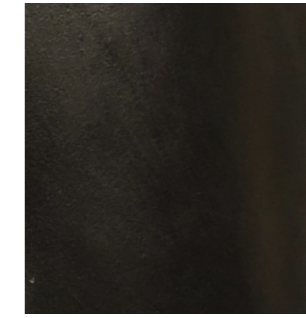
This chrome- and vacuum-tanned, full-grain aniline leather has a waxed surface for an exceptionally soft touch and a glossy finish that highlights its natural texture. Becoming more comfortable over time, it provides a supportive and cosy seating experience and develops a distinctive patina that adds character and uniqueness to each piece of furniture.



0250 COGNAC



0329 BROWN



1618 BLACK

## PRICE CATEGORY

1

## MANUFACTURER

Nevotex

## THICKNESS

0.9 – 1.1 mm

## MATERIALS

100 % Aniline Leather

## LIGHTFASTNESS

≥3 (ISO 1-8)

## FLEXING RESISTANCE

50.000 cycles

## C&amp;M (BS5852-0/1)

Yes

## CAL 117

Yes

## CRIB 5 (BS5852-5)

No

## CERTIFICATE

Oeko-Tex®

ENVY  
*by Sørensen Leather*

Smooth to the touch and with a subtle surface sheen, Envy is an elegant aniline leather with subtle natural markings, artfully minimised through a special sanding process. The addition of a light, transparent wax further enhances surface protection, resulting in a delightful feel and a brilliant sense of depth. Leather Standard by Oeko-Tex® certified.



NOUGAT - 20322



OLIVE - 20324

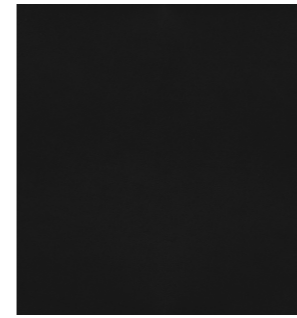
## PRICE CATEGORY

1

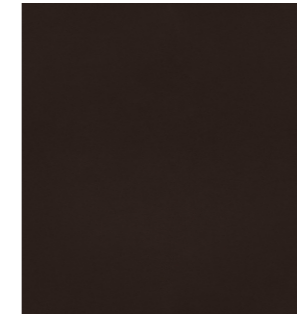
MANUFACTURER  
Sørensen LeatherMATERIALS  
100 % Aniline LeatherLIGHTFASTNESS  
>3 (ISO 1-8)TEARING STRENGTH  
≥20 NFLEXING RESISTANCE  
Non applicableC&M (BS5852-0/1)  
YesCAL 117  
YesCRIB 5 (BS5852-5)  
NoCERTIFICATE  
Oeko-Tex®

ULTRA  
by Sørensen Leather

A versatile protected leather ideal for everyday use, Ultra has a buffed, embossed texture for a tactile feel. Its uniform grain pattern across the entire hide ensures a consistent look, and a protective finish ensures Ultra is easy to maintain and retains its original appearance for an extended period, resisting signs of aging or fading.



BLACK - 41599



CHOCOLATE - 41589



BRANDY - 41574



CAMEL - 41571

---

PRICE CATEGORY

1

---

MANUFACTURER

Sørensen Leather

---

THICKNESS

0.9 – 1.1 mm

---

MATERIALS

100% Protected Leather

---

LIGHTFASTNESS

>5 (ISO 1-8)

---

TEARING STRENGTH

≥20 N

---

FLEXING RESISTANCE

50.000 cycles

---

CAL 117

Yes

---

CRIB 5 (BS5852-5)

Yes

---

CERTIFICATE

Oeko-Tex®

## *Leather Price Category 2*

DUNES  
by Sørensen Leather

An exclusive aniline leather characterised by its natural, unrefined appearance, Dunes® achieves its luxurious velvety touch through sanding and a special leather oil application. Its matte finish exudes raw elegance, accentuated by unique natural markings that lend individuality to each hide. Patinating through usage and exposure to light, Dunes becomes shinier and smoother over time.



ANTHRAZITE - 21003



COGNAC - 21000

---

PRICE CATEGORY  
2

---

MANUFACTURER  
Sørensen Leather

---

THICKNESS  
1.1 – 1.3 mm

---

CERTIFICATE  
Nordic Swan Ecolabel

---

MATERIALS  
100% Aniline Leather

---

LIGHTFASTNESS  
3 (ISO 1-8)

---

TEARING STRENGTH  
≥20 N

---

FLEXING RESISTANCE  
20.000 cycles

---

CAL 117  
Yes

---

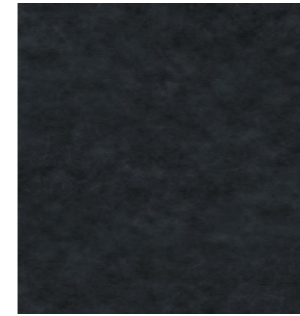
CRIB 5 (BS5852-5)  
No - Cannot be treated

---

CERTIFICATE  
Oeko-Tex®

NUANCE  
by Sørensen Leather

Nuance boasts a remarkable depth and dimension that radiates authenticity while offering durability. With its sumptuous, tactile feel, the protected leather is nuanced in both texture and tone, retaining the natural patterns and imperfections inherent to each hide. An invisible coating preserves the softness and protects against wear and tear.



BURNED GREY - 40783



LIGHT GREY - 40782

---

PRICE CATEGORY  
2

---

MANUFACTURER  
Sørensen Leather

---

MATERIALS  
100% Protected Leather

---

THICKNESS  
1.1 – 1.3 mm

---

MATERIALS  
100% Aniline Leather

---

LIGHTFASTNESS  
>5 (ISO 1-8)

---

TEARING STRENGTH  
≥20 N

---

FLEXING RESISTANCE  
50.000 cycles

---

CAL 117  
Yes

---

CRIB 5 (BS5852-5)  
No

---

CERTIFICATE  
Oeko-Tex®

## *Leather Price Category 3*

SHEEPSKIN  
*by Skandilock*



---

PRICE CATEGORY  
3

---

MANUFACTURER  
Skandilock

---

MATERIALS  
Sheepskin

---

THICKNESS  
17 mm

---

CERTIFICATE  
Oeko-Tex®\*

\* ALL COLOURS EXCEPT  
ESPRESSO IS OEKO-TEX®  
CERTIFIED BY SKANDILOCK



OFF WHITE



SAHARA



MOONLIGHT



HONEY



ESPRESSO



GREEN TEA

SHEEPSKIN  
*by Nevotex*



---

PRICE CATEGORY  
3

---

MANUFACTURER  
Nevotex

---

MATERIALS  
Sheepskin

---

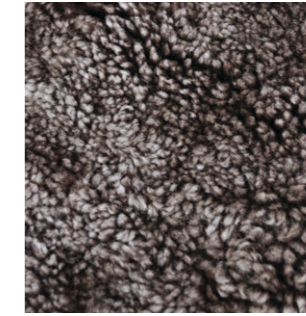
THICKNESS  
17 – 21mm



NATURE



SAHARA



ROOT

## NATURAL MARKINGS ON LEATHER

Individual and unique markings may appear on the leather and should not be considered as defects.



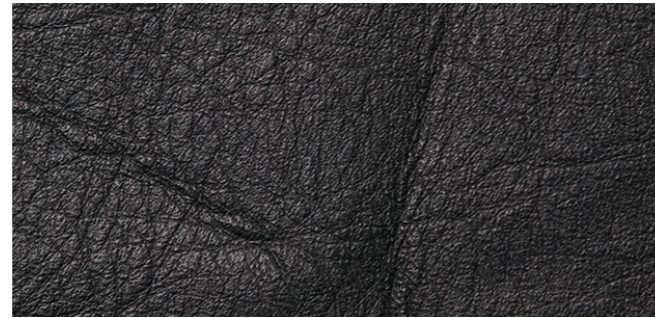
FAT WRINKLES



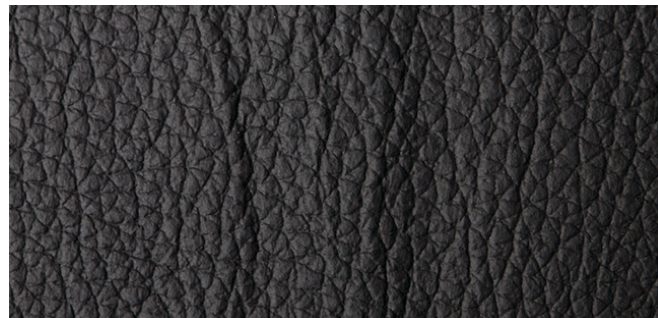
SCAR / INSECT BITES



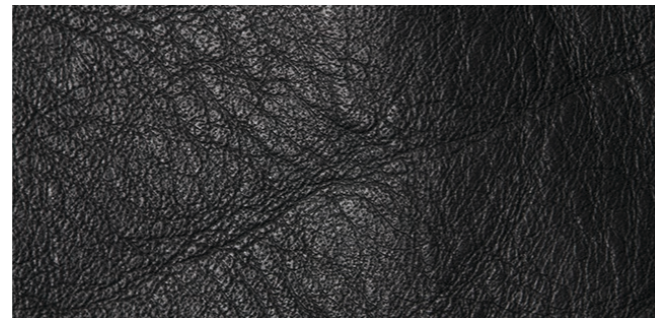
FOLDS



BUTCHING SCAR



HEALED SCARS



FAT WRINKLES

