

DE LA ESPADA
UPHOLSTERY COLLECTION
2024

DE LA ESPADA

INDEX

DE LA ESPADA

	<u>PAGE</u>	<u>PRICE RANGE</u>
<u>FABRICS</u>		
FEZ.....	3	Ⓐ *
STEP.....	4	Ⓐ *
AVALON 2.....	5	Ⓒ
PHLOX.....	6	Ⓒ *
BYRAM.....	7	Ⓓ
BALDER 3.....	8	Ⓑ
SUNNIVA 3.....	9	Ⓑ
CLAY.....	10	Ⓐ *
NARA.....	11	Ⓒ *
VIDAR 3.....	12	Ⓒ
MOSS.....	13	Ⓐ *
SAFIRE.....	14	Ⓐ
ZERO.....	15	Ⓐ *
ATOM.....	16	Ⓓ
SONAR 3.....	17	Ⓒ+
JADE.....	18	Ⓐ
FUSE.....	19	Ⓒ
<u>LEATHER / SHEEPSKIN</u>		
NATURAL GRAIN LEATHER.....	20	Ⓑ
ELMORUSTICAL VIII.....	21	Ⓒ+
CORRECTED GRAIN / FINISHED..	22	Ⓐ
CURLY SHEEPSKIN.....	23	Ⓓ

* not available in the USA

FEZ

This jacquard velvet textile is designed by Vincent Van Duysen. A chenille base with a cotton yarn pile creates a textile reminiscent of corduroy with a casual and rich appearance.

MATERIAL:

83% Cotton
15% Polyester
2% Viscose

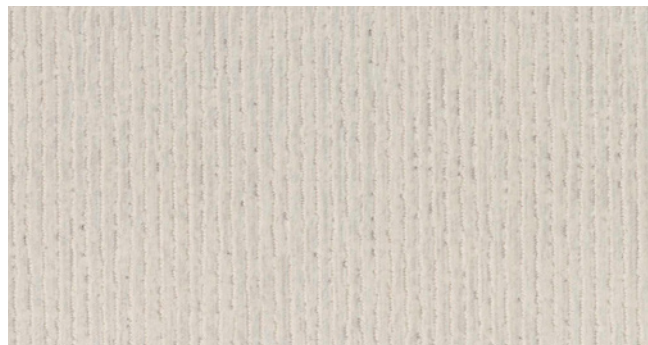
DESIGNER:

Vincent Van Duysen

DURABILITY:

60,000 Martindale

DE LA ESPADA



005



010



008



009



011

Please note: Fez is not available in the USA.



RANGE

STEP

DE LA ESPADA

Step is a modern interpretation of a classic twill in chenille yarn. The yarn-dyed tonal colours create a subtle diagonal stripe on a fabric with a soft and gentle handle.

MATERIAL:

48% Cotton
30% Viscose
22% Polyester

DESIGNER:

Sahco

DURABILITY:

40,000 Martindale



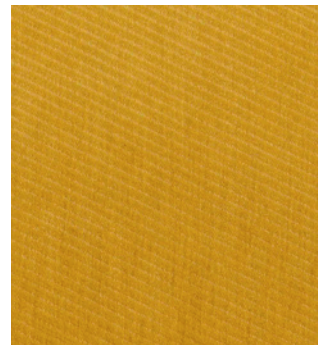
004



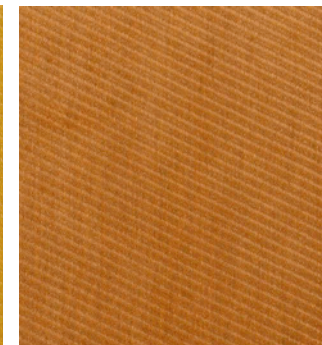
005



019



002



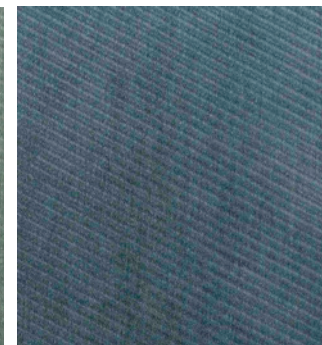
015



018



023



009

Please note: Step is not available in the USA.



RANGE

AVALON 2

Avalon velvet is a much-loved basic. This piece-dyed fabric has a unique glossy surface almost reminiscent of silk. It has flame retardant properties and is extremely hardwearing.

MATERIAL:
100% Trevira CS

DESIGNER:
Sahco

DURABILITY:
100,000 Martindale

DE LA ESPADA



035



056



034



038



055



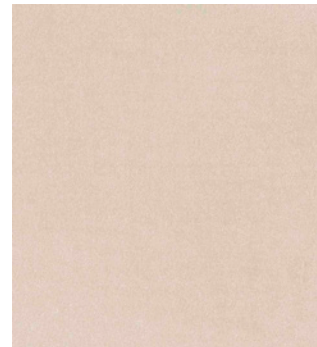
050



003



004



007



RANGE

PHLOX

Phlox is designer Raf Simons' take on a classic corduroy. The ribbed structure is sensuous and tactile with its velvety handle and amped-up scale. It is extremely hardwearing.

MATERIAL:
90% Cotton, 10% Polyester

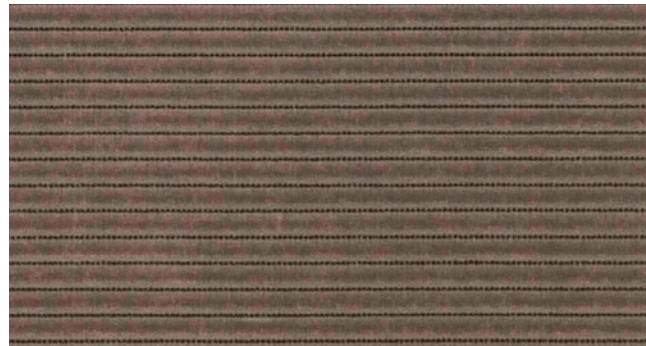
DESIGNER:
Raf Simons

DURABILITY:
100,000 Martindale

DE LA ESPADA



213



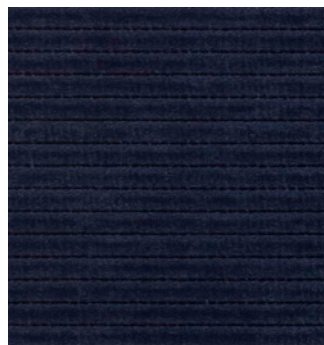
243



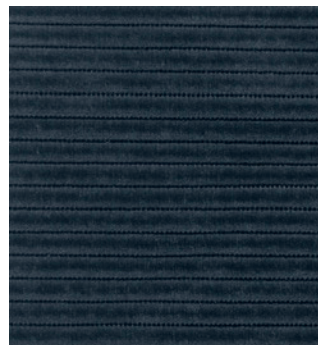
443



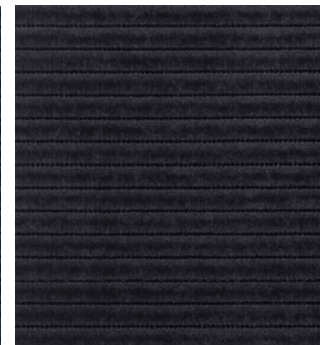
983



783



883



183

Please note: Phlox is not available in the USA.



RANGE

BYRAM

Byram, designed by Raf Simons, is made with pure kid mohair. Thanks to the satiny sheen of its pile, Byram exhibits beautifully nuanced colour. This luxuriously soft textile is very hardwearing.

MATERIAL:

100% Kid mohair

DESIGNER:

Raf Simons

DURABILITY:

70,000 Martindale

DE LA ESPADA



131



471



161



361



971



RANGE

BALDER 3

Designed by Fanny Aronsen and Raf Simons, Balder is woven from several different tones of thread creating subtle fluctuations in colour across the surface of the fabric. It is extremely hardwearing.

MATERIAL:

68% New wool

26% Cotton

6% Nylon

DESIGNER:

Raf Simons & Fanny Aronsen

DURABILITY:

100,000 Martindale

DE LA ESPADA



612



132



192

B

RANGE

SUNNIVA 3

Designed by Fanny Aronsen and Raf Simons, this fabric combines two tones of wool, woven in a fine, flat, tweed-like pattern with a glossy top note.

MATERIAL:

58% New wool

25% Viscose

8% Linen

5% Nylon

4% Polyester

DESIGNER:

Raf Simons & Fanny Aronsen

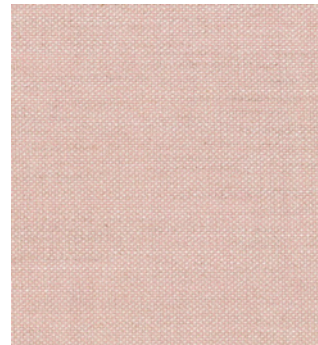
DURABILITY:

50,000 Martindale

DE LA ESPADA



811



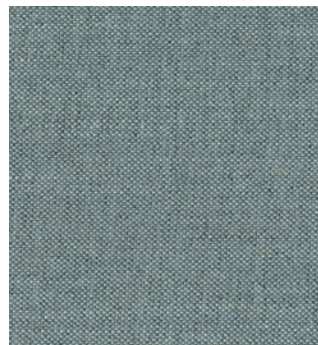
236



717



132



152



RANGE

CLAY

Clay, designed Vincent Van Duysen, features mixed colours of yarn in warp and weft for a unique structured surface. The fabric is elegant yet casual.

MATERIAL:

76% Linen
21% Cotton
3% Polyester

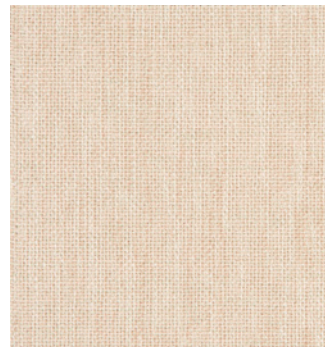
DESIGNER:

Vincent Van Duysen

DURABILITY:

45,000 Martindale

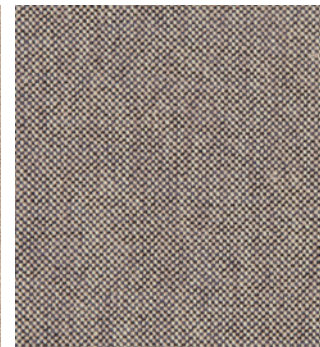
DE LA ESPADA



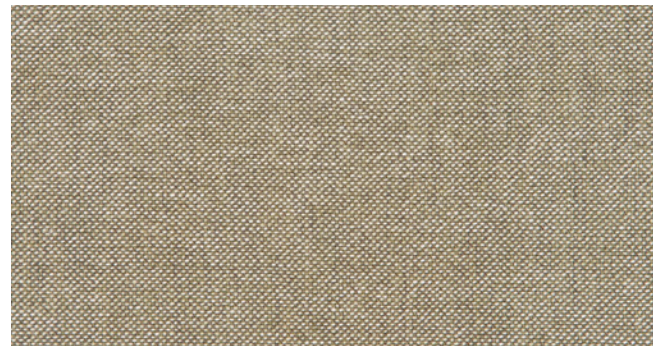
011



010



009



015



005



002

Please note: Clay is not available in the USA.



RANGE

NARA

DE LA ESPADA

This classic upholstery has a plain weave in viscose and linen chenille that provides a distinctive textured appearance. The rich and soft textile has a lively and natural surface.

MATERIAL:

50% Linen

35% Cotton

15% Viscose

DESIGNER:

Sahco

DURABILITY:

60,000 Martindale



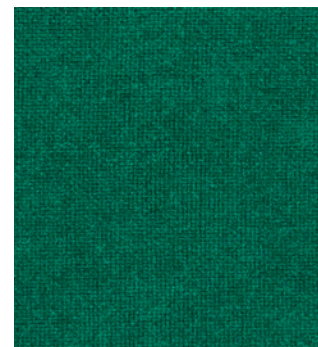
001



003



005



013



007

Please note: Nara is not available in the USA.



RANGE

VIDAR 3

Woven from bouclé yarns with a regular loop size, Vidar has a large-grained texture, a gentle satin surface finish, and great depth. Designed by Raf Simons and Fanny Aronsen, it is extremely hardwearing at 100,000 rubs Martindale.

MATERIAL:

94% New wool
6% Nylon

DESIGNER:

Raf Simons & Fanny Aronsen

DURABILITY:

100,000 Martindale

DE LA ESPADA



152



1880



943



1062



1511



222



MOSS

DE LA ESPADA

Moss was designed by Vincent Van Duysen, inspired by his own home interior. The mixture of twisted yarn and chenille gives the fabric surface a unique structure and a soft handle.

MATERIAL:

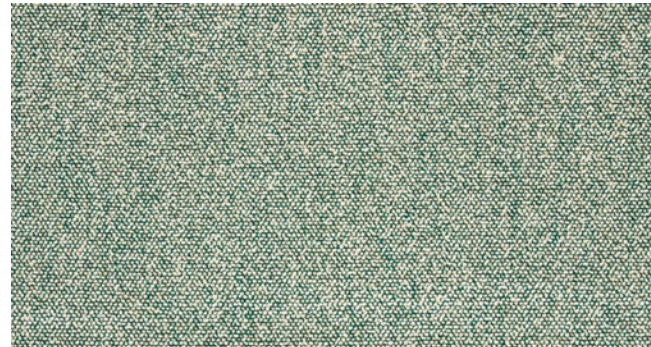
- 52% Cotton
- 22% Viscose
- 14% Acrylic
- 6% Linen
- 3% Nylon
- 3% Polyester

DESIGNER:

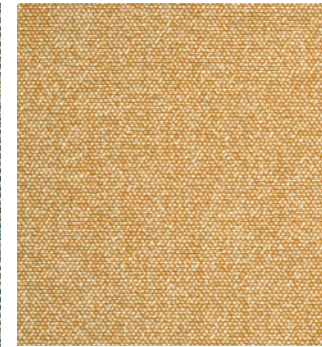
Vincent Van Duysen

DURABILITY:

50,000 Martindale



003



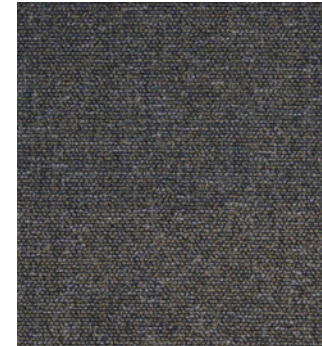
021



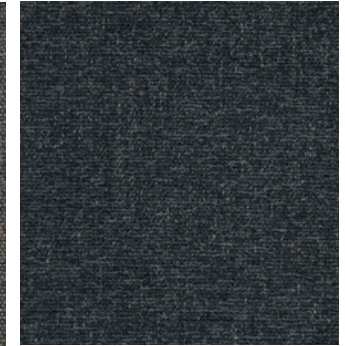
005



006



007



008



004



011



015



016

Please note: Moss is not available in the USA.



RANGE

SAFIRE

Safire has a subtle handwoven appearance. The thick bouclé and chenille yarns contribute to its wooly soft handle and create a vibrant two-tone effect.

MATERIAL:

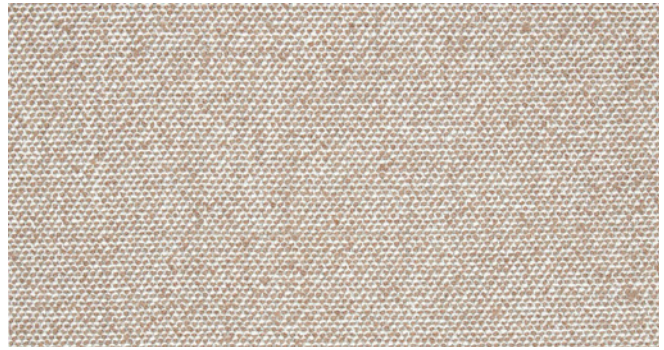
- 43% Viscose
- 17% Acrylic
- 15% New wool
- 9% Cotton
- 8% Linen
- 8% Polyester

DESIGNER:

Sahco

DURABILITY:

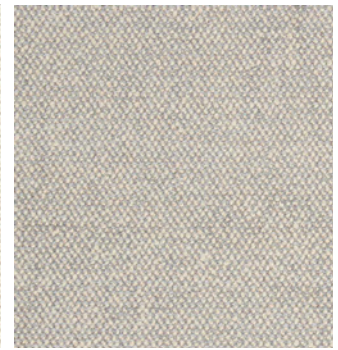
40,000 Martindale



004



007



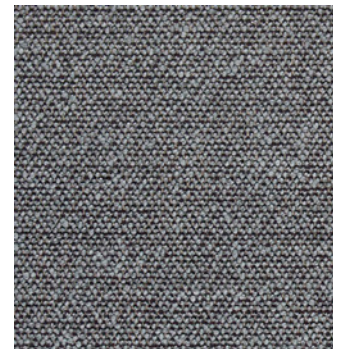
008



015



010



009



ZERO

Influenced by Parisian couture clothing, Zero is an elegant and irregular bouclé upholstery textile. The pearl effect yarn is used in both warp and weft for a sophisticated appearance. It is very hardwearing at 70,000 rubs Martindale.

MATERIAL:

65% Cotton
20% Acrylic
15% Polyester

DESIGNER:

Sahco

DURABILITY:

70,000 Martindale

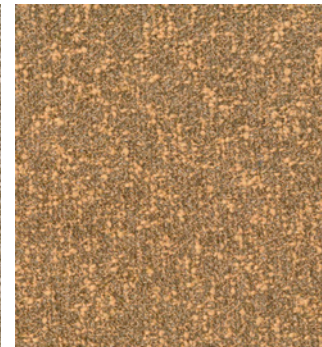
DE LA ESPADA



001



002



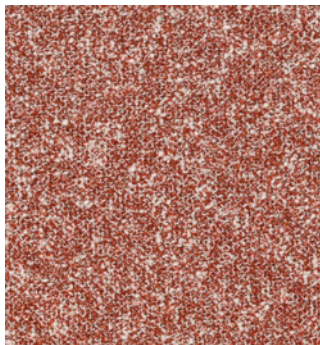
003



012



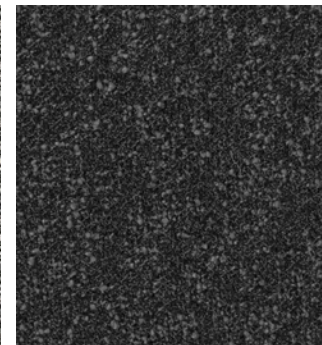
005



008



004



013

Please note: Zero is not available in the USA.



RANGE

ATOM

Atom is a vibrant and experimental bouclé fabric with no visible repeat. It is inspired by fragments of pointillist landscapes in expressionist paintings. The textile features speckles of colour that seem randomly scattered across its surface. This textile, designed by Raf Simons, is very hardwearing at 65,000 rubs Martindale.

MATERIAL:

90% New wool (worsted)

8% Nylon

2% Polyester

DESIGNER:

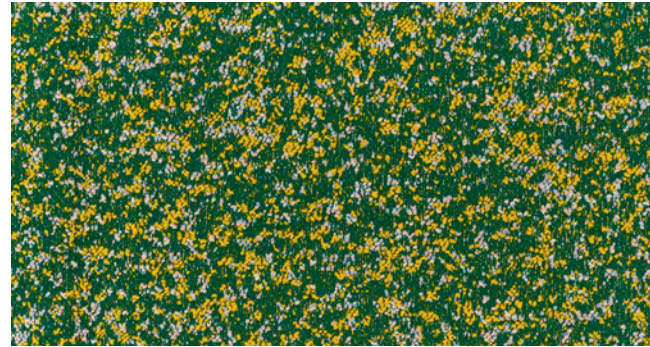
Raf Simons

DURABILITY:

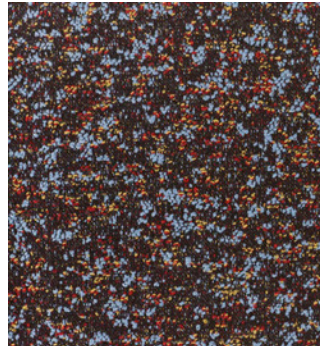
65,000 Martindale



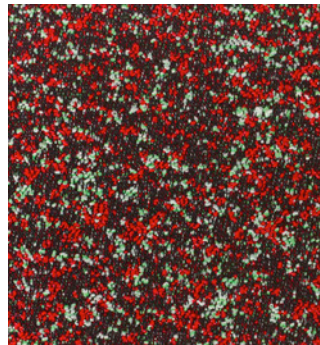
124



964



774



574

DE LA ESPADA



RANGE

SONAR 3

Inspired by the fine suiting tweeds used in high-end fashion garments, Sonar, designed by Raf Simons, features a complex mix of colours and textures.

MATERIAL:

59% New wool
25% Viscose
9% Linen
5% Nylon
2% Polyester

DESIGNER:

Raf Simons

DURABILITY:

20,000 Martindale



113



684



173



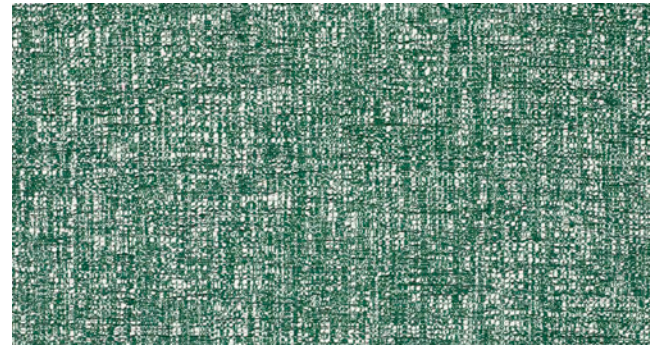
773



153



934



974



JADE

Jade combines a soft, matte chenille yarn and smooth, shiny polyester in the warp and weft. An irregular chequerboard design creates an embossed effect.

MATERIAL:

45% Cotton
30% Viscose
25% Polyester

DESIGNER:

Sahco

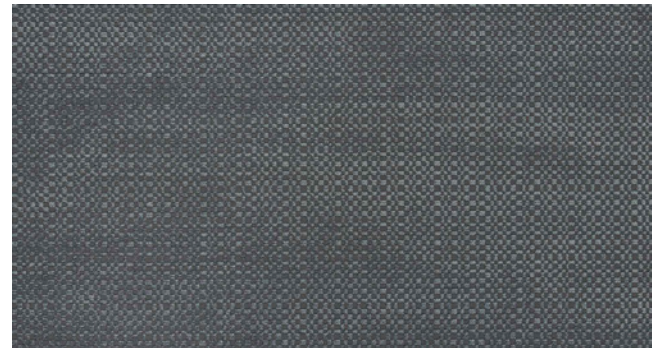
DURABILITY:

20,000 Martindale

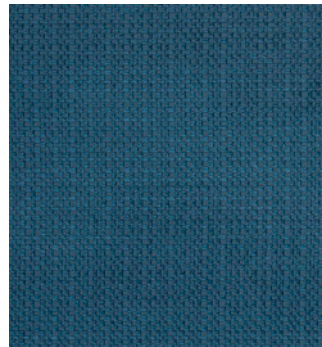
DE LA ESPADA



001



002



005



003



007



016



RANGE

FUSE

Fuse, a textile designed by Raf Simons, has ribbed stripes woven in stitch-like patterning that slightly blends the two colours in the textile. Fuse is extremely hardwearing at 100,000 rubs Martindale.

MATERIAL:

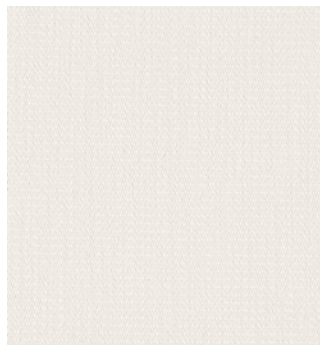
65% New wool (worsted)
23% Cotton
8% Viscose
4% Nylon

DESIGNER:

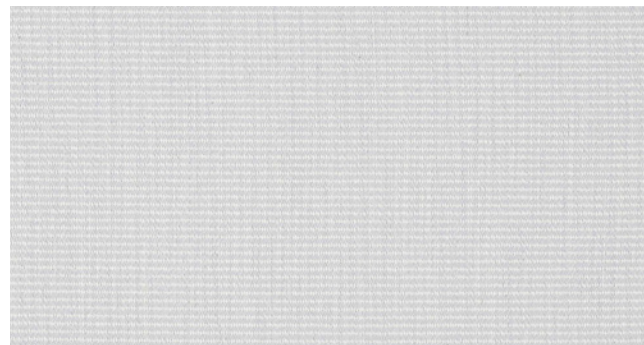
Raf Simons

DURABILITY:

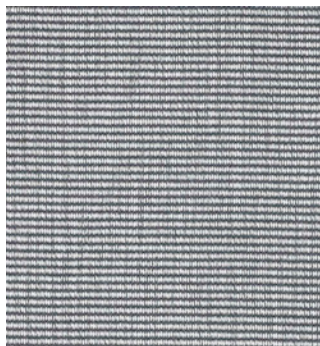
100,000 Martindale



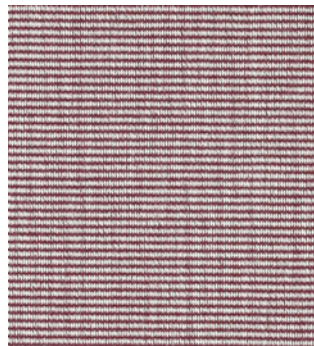
111



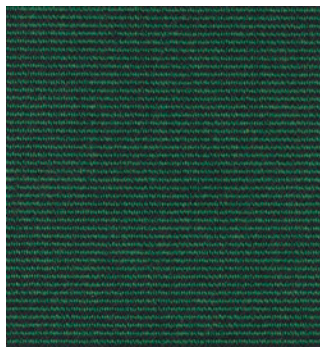
121



131



631



981



NATURAL GRAIN LEATHER

The natural grain of this finished cow hide leather is preserved, the surface lightly buffed. Natural grain variations lend each piece individuality and character.



BROWN



BLACK

DE LA ESPADA

B

RANGE

ELMORUSTICAL VIII

DE LA ESPADA

An aniline leather from Scandinavian cattle, Elmorustical is soft and natural, offering outstanding comfort. This full grain leather maintains the distinct features of the natural hide, lending each piece individuality and character.

Please note that when using Elmorustical to upholster expansive surfaces such as the headboard of a bed, our craftspeople will use their discretion to ensure the natural variations in the colour and grain are most elegantly displayed. This may mean adding a stitch line to the surface.



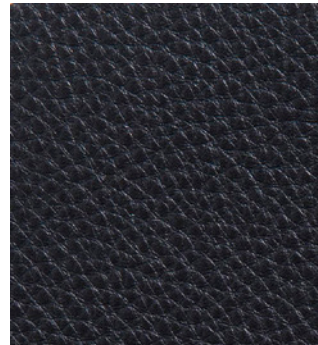
22679



93287



91089



99991



RANGE

CORRECTED GRAIN / FINISHED LEATHER

DE LA ESPADA

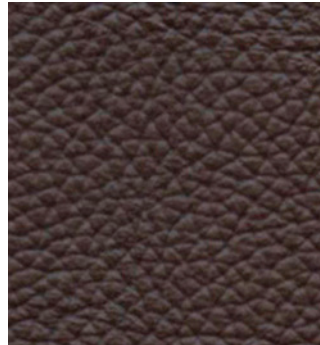
Our finished leather is soft, supple, and hardwearing. A corrected grain leather, it is water resistant and easy to clean making it suitable for a wide range of applications. The natural cow hide undergoes a retannage process in addition to being treated with technically advanced finishing formulas to create a protective barrier against spillage and staining.



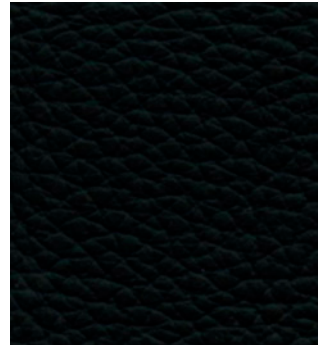
FOG



DUNE



CHOCOLATE



LIQUORICE



RANGE

CURLY SHEEPSKIN

Our curly wool sheepskin is durable and luxuriously soft. The 12mm wool height provides sumptuous depth while allowing for clean contours on our upholstered furniture. The visual depth is enhanced by the subtle variation between the highlighted tips and darker base.

This material is scarce as the hides are small and, while they vary in quality, only the best quality hides are chosen before being expertly stitched together by our supplier in Sweden. This scarcity affects our manufacturing lead time, so products purchased in Curly Sheepskin will always have specially-quoted lead times.

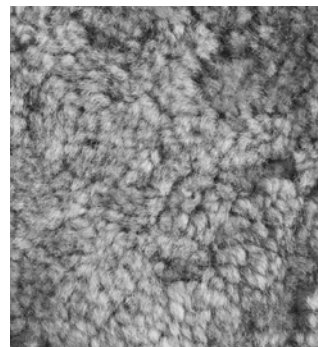
Curly Sheepskin is only available on select products, as it behaves differently from leather and most textiles in terms of elasticity which affects how it is applied to different shapes.

Curly Sheepskin is currently available for the following products:

- Capo Lounge Armchair
- Capo Lounge Chair
- Cursa Lounge Chair
- Elysia Lounge Chair
- Hadar Lounge Chair
- Nino Ottoman
- Saia Lounge Chair
- Sela Lounge Chair with Narrow Arms
- Sela Lounge Chair with Wide Arms
- Solo Lounge Chair
- Solo Ottoman
- Twenty-Five Bergere Chair
- Twenty-Five Lounge Armchair
- Twenty-Five Ottoman



MOHAWI



SCANDINAVIAN GREY

