

**Content**

Flax 63%  
Wool 29%  
Nylon 5%  
Cotton 3%

**Lightfastness**

ISO 5

**Abrasion**

100,000 rubs  
Martindale method

**Maintenance**

Clean with solvent-based  
cleaning agent



02TOS Beech



16TOS Moss



17TOS Atlantic



18TOS Denim



14TOS Ice



24TOS Chestnut



22TOS Carnelian



09TOS Anthracite



**Content**

Trevira CS 100%

**Flame Resistance**

UNI 9177 - Classe 1  
California TB 117:2013  
EN 1021-1&2  
BS 5852-Part 0-1 (C&M)  
IMO MSC 307(88)  
Annex 1 Part 7+8  
NF P 92-503-507 M1  
DIN 4102 B1  
UNI 9175 - 1.IM  
NFPA 260:2019

**Lightfastness**

ISO 5

**Abrasion**

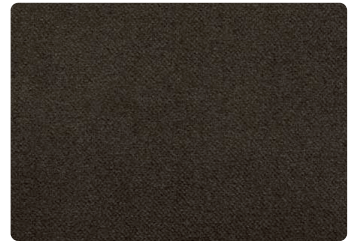
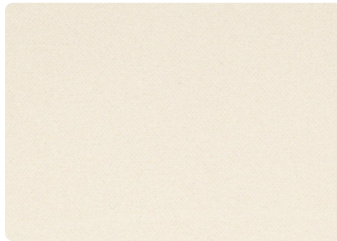
190,000 rubs  
Martindale method

**Maintenance**

Wet cleaning warp  
Shrinkage app. 2%



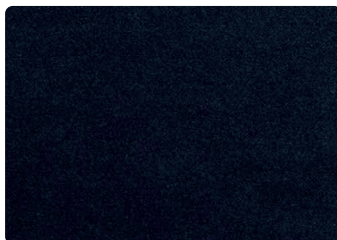
12MO Beige



13MO Ivory

10MO Mustard

11MO Mink



04MO Dark Blue

05MO Navy Blue

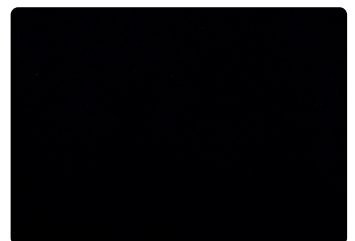
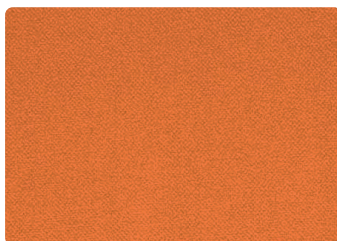
03MO Light Grey



09MO Moss

08MO Dark Red

07MO Burgundy



06MO Orange

02MO Dark Grey

01MO Black

Please use this sample card as indicative, only. It is provided as a guide. There may be variations between this sample card and the real samples.



**Content**

Fleece wool 96%  
Nylon 4%

**Lightfastness**

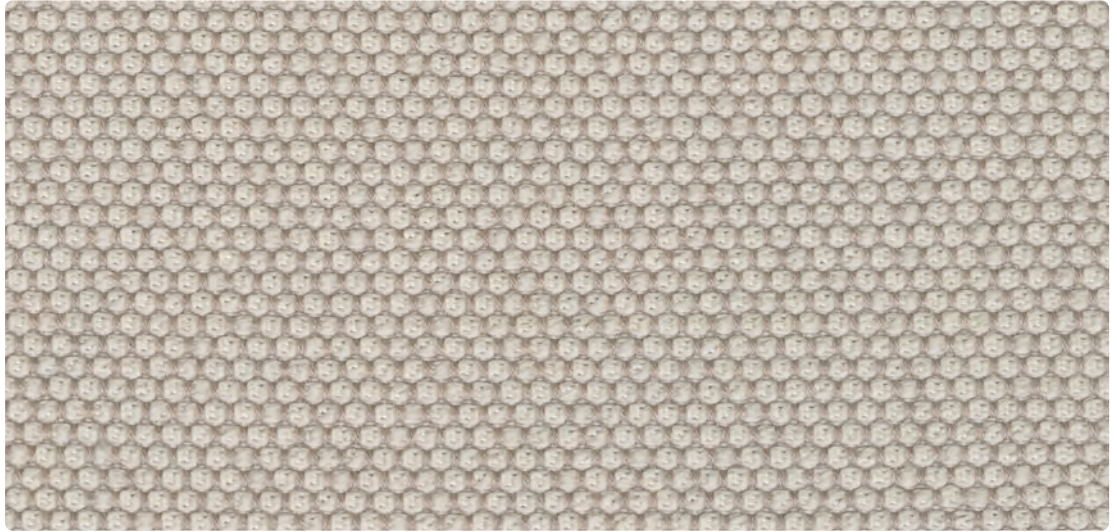
ISO 5/8

**Abrasion**

90,000 rubs  
DIN EN ISO 12947-2

**Maintenance**

Clean with solvent-based  
cleaning agent



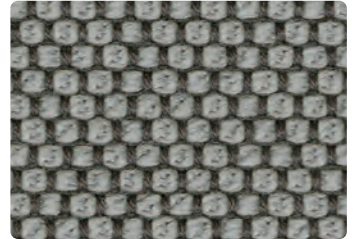
OP24 Calla



OP58 Macadamia



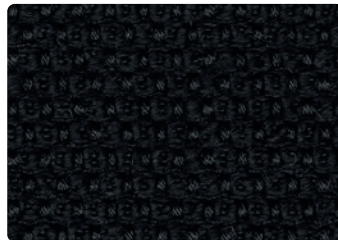
OP57 Flanell



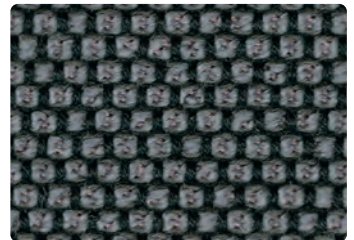
OP60 Fango



OP37 Pepper



OP18 Ebony



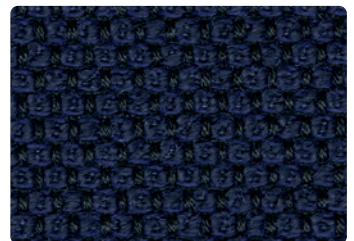
OP54 Carbon



OP64 Prime



OP69 Delft



OP70 Navy



OP71 Indio



**Content**

Acetate 57%  
Polyester 37%  
Viscose 6%

**Lightfastness**

ISO 4/5

**Abrasion**

32,000 rubs  
Martindale method

**Maintenance**

Clean with solvent-based  
cleaning agent



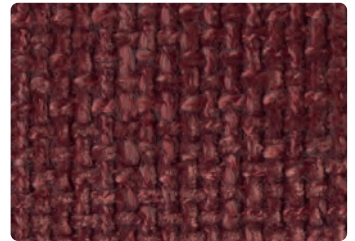
001HER Ivory



003HER Light Taupe



021HER Powder



020HER Copper



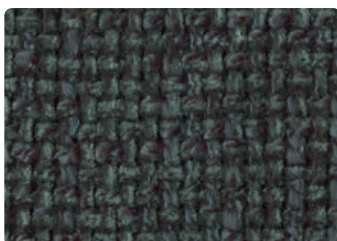
029HER Moss



031HER Gold



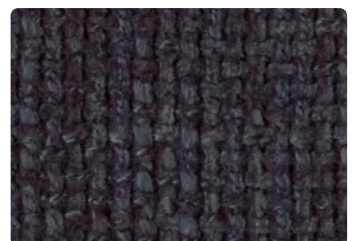
018HER Olive Green



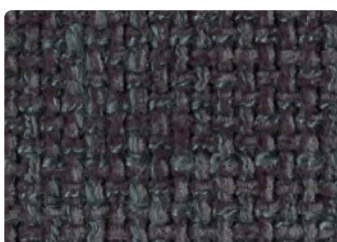
016HER Emerald Green



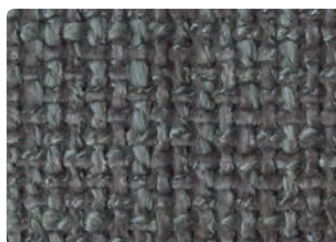
024HER Sky/Blue



023HER Night Blue



011HER Dark Grey



012HER Grey

Please use this sample card as indicative, only. It is provided as a guide. There may be variations between this sample card and the real samples.



**Content**

Cotton 100%

**Lightfastness**

ISO 4/5

**Abrasion**

50,000 rubs  
Martindale method

**Maintenance**

Clean with solvent-based  
cleaning agent



171EVA Avio



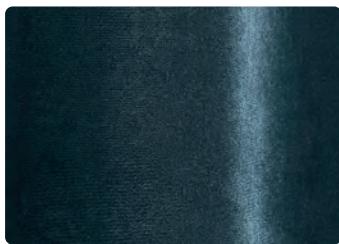
172EVA Steel



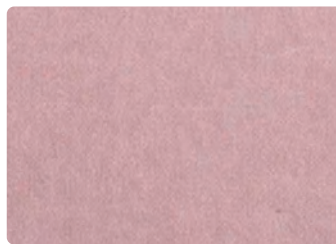
140EVA Sea Green



149EVA Ocean



170EVA Night Blue



125EVA Rose



177EVA Beige

Please use this sample card as indicative, only. It is provided as a guide. There may be variations between this sample card and the real samples.



**Content**

Cotton 100%

**Lightfastness**

ISO 4/5

**Abrasion**

50,000 rubs  
Martindale method

**Maintenance**

Clean with solvent-based  
cleaning agent



131EVA Dune



135EVA Clay



134EVA Ebony



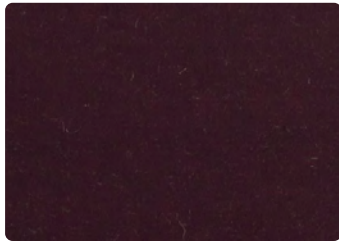
115EVA Saffron



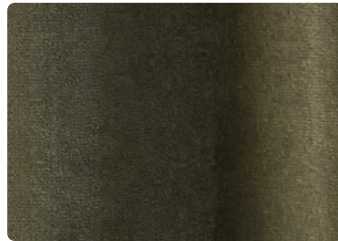
116EVA Cayenne



120EVA Wine



119EVA Plum



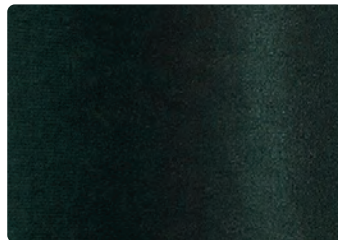
168EVA Mousse



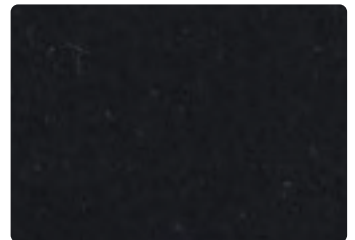
145EVA Olive



144EVA Bottle Green



169EVA Cactus



138EVA Black



756



742



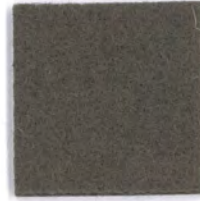
712



686



782



944



984



791



846



856



793



886



876



893



936



922



826



836



956



966



Divina 3



684



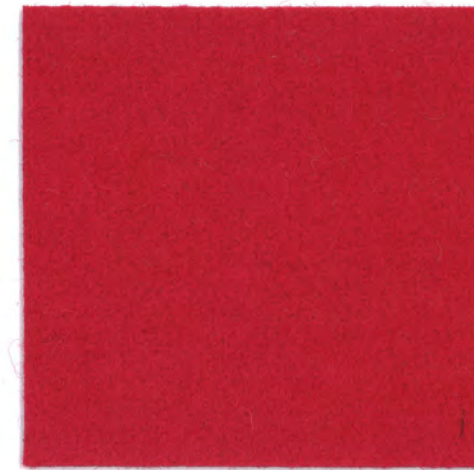
691



171



173



636



376



676



191



154



696



692



384



181



426



623



626



356



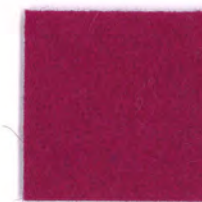
393



236



562



662



666



224



334



246



462



542



652



671



106



346



444



526



536



584



552



**Content**

New wool 95%  
Polyamide 5%

**Flame Resistance**

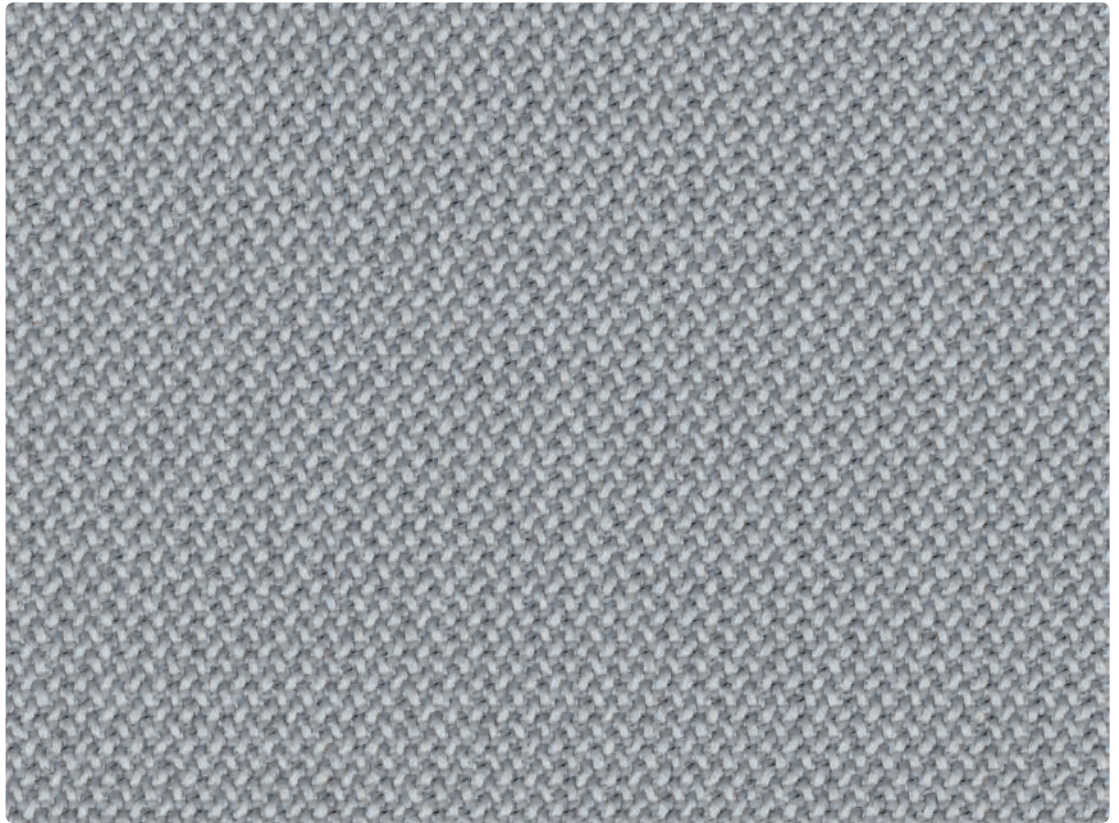
FAR 25.853 (12 sec. vertical)  
CAL TB 117-2013  
DIN 4102-1 B2  
EN 13501-1  
EN 1021-1 and -2  
BS 5852:2006 (part 1)  
BS 5852:2006 (part 2) Crib 5  
BKZ: 5.3 SN 198898  
UNI 9175 (1 IM)  
IMO: 2014/90/EU/Marine  
Equipment Directive

**Lightfastness**

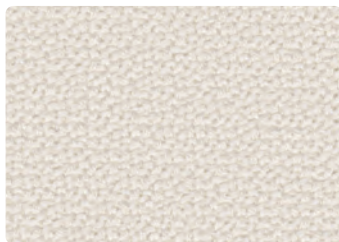
Min 5-8 EN ISO 105-B02

**Maintenance**

Dry clean



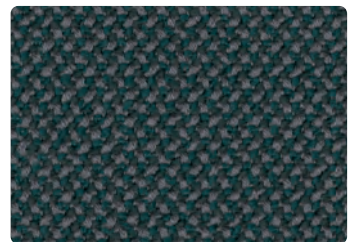
RCR95 Chalk



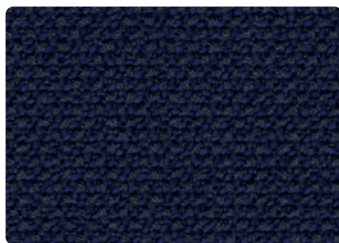
RCR02 Snow



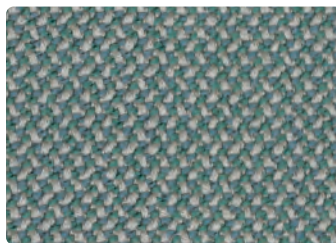
RCR34 Calla



RCR82 Jaspis



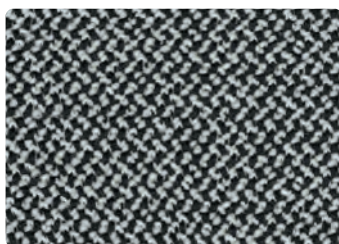
RCR90 Navy



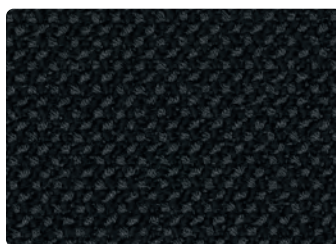
RCR86 Lake



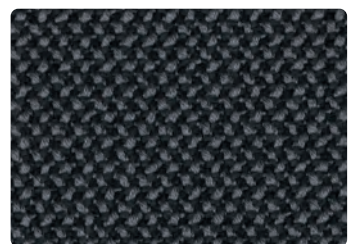
RCR97 Zinn



RCR16 Pepper



RCR08 Black



RCR25 Asphalt



**Content**

Cotton 38%  
 Acrylic 24%  
 Viscose 18%  
 Wool 12%  
 Nylon 2%

**Flame Resistance**

BS 5852:2006

**Lightfastness**

ISO 4/5

**Abrasion**

62,000 rubs  
 Martindale method

**Maintenance**

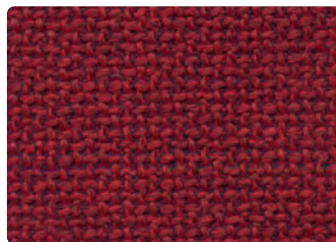
Clean with solvent-based  
 cleaning agent



01WE White



19WE Light Brown



18WE Red



14WE Blue



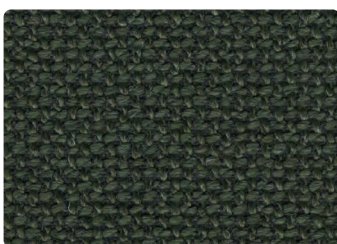
13WE Dark Grey



10WE Grey



03WE Light Grey



12WE Green



04WE Sand

Please use this sample card as indicative, only. It is provided as a guide. There may be variations between this sample card and the real samples.



**Content**

Acrylic 43%  
Cotton 25%  
Polyester 15%  
Viscose 14%  
Wool 3%

**Flame Resistance**

California Technical  
Bulletin 117-2013  
British Standard 5852: 1979  
Part1 (cigarette & match)

**Lightfastness**

ISO 3/5

**Abrasion**

25,000 rubs  
Martindale method

**Maintenance**

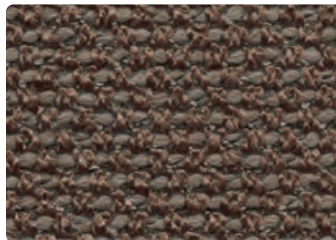
Dry clean, only



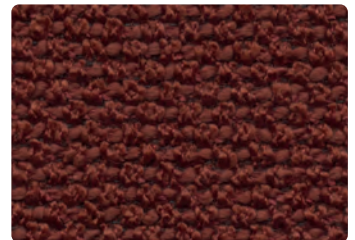
06PE Ivory



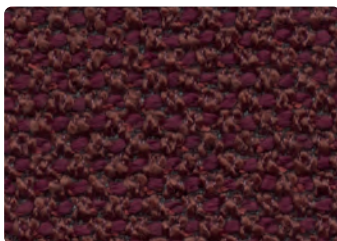
05PE Sand



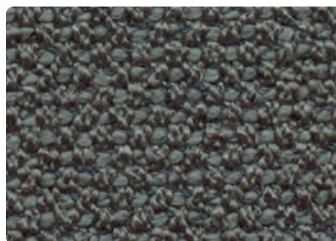
04PE Taupe



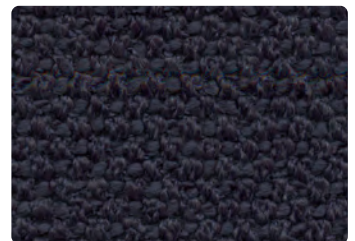
02PE Brick



01PE Burgundy



03PE Lagoon



08PE Blue



09PE Dark Grey



07PE Light Grey

Please use this sample card as indicative, only. It is provided as a guide. There may be variations between this sample card and the real samples.



**Content**

Cotton 20%  
Polyester 80%

**Lightfastness**

ISO 5

**Abrasion**

100,000 rubs  
Martindale method

**Maintenance**

Clean with solvent-based  
cleaning agent



07H Ice



05H Olive



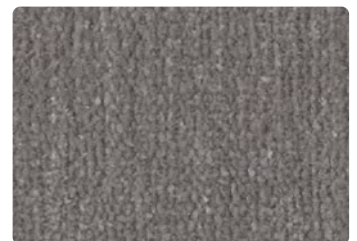
02H Grey



04H Moss



03H Dark Blue



06H Light Grey



01H Black

Please use this sample card as indicative, only. It is provided as a guide.  
There may be variations between this sample card and the real samples.



**Content**

Acrylic 45%  
Cotton 19%  
Flax 12%  
Polyester 12%  
Viscose 12%

**Lightfastness**

ISO 4/5

**Abrasion**

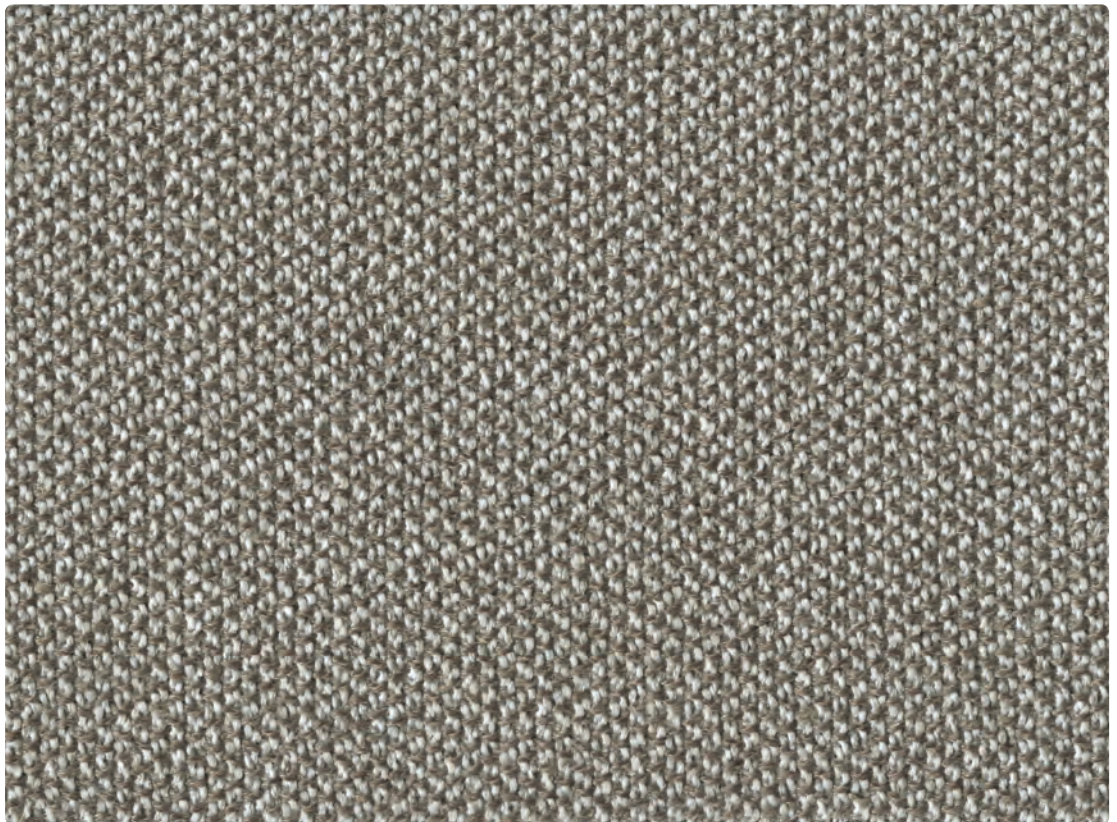
30,000 rubs  
Martindale method

**Maintenance**

Clean with solvent-based  
cleaning agent



01FED White



03FED Sand



**Content**

Acrylic 47%  
Cotton 26%  
Flax 9%  
Polyester 9%  
Viscose 9%

**Lightfastness**

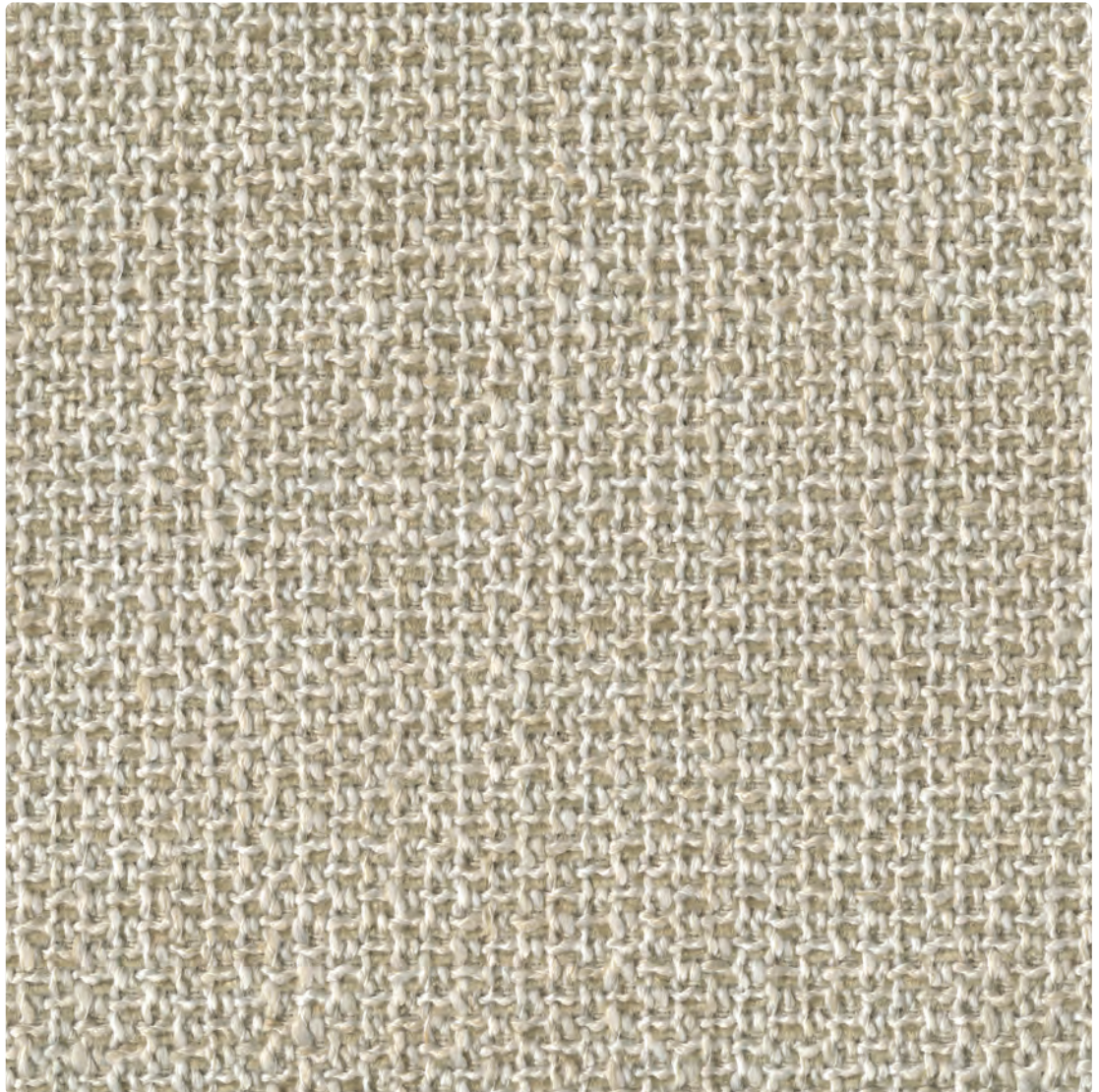
ISO 4/5

**Abrasion**

30,000 rubs  
Martindale method

**Maintenance**

Clean with solvent-based  
cleaning agent



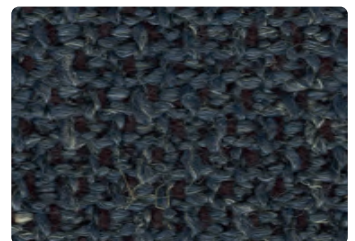
65CRO Ivory



35CRO Brown



52CRO Bluish Green



14CRO Blue



Tonus 4



424



440



125



454



605



554



224



244



464



130



608



100



135



654



207



474



610



609



374



664



684



634



636





129



631



754



508



210



132



764



216



690



854



613



240



128



615



364



964



131



934



974



914



619



954



118



394



**Content**

Wool 100%

**Flame Resistance**

NFPA 260 (UFAC Class 1)

EN1021 1/2

British Standard 5852:

1990 Source 5 (crib 5)

**Lightfastness**

ISO 4

**Abrasion**

40,000 rubs

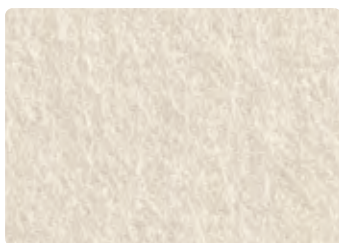
Martindale method

**Maintenance**

Clean with solvent-based  
cleaning agent



K120710 Grape



K12071 Ivory



K12072 Tan



K12073 Apple



K12074 Green



K12075 Canary



K12076 Tangerine



**Content**

Wool 100%

**Flame Resistance**

NFPA 260 (UFAC Class 1)

EN1021 1/2

British Standard 5852:

1990 Source 5 (crib 5)

**Lightfastness**

ISO 4

**Abrasion**

40,000 rubs

Martindale method

**Maintenance**

Clean with solvent-based

cleaning agent



K12077 Poppy



K12078 Pink



K12079 Rouge



K120711 Cadet



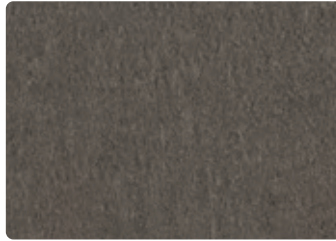
K120712 Baltic



K120713 Blue



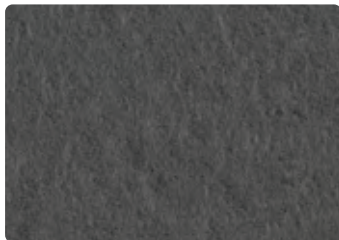
K120714 Toast



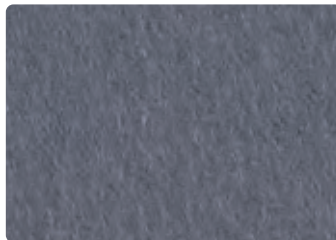
K120715 Mocha



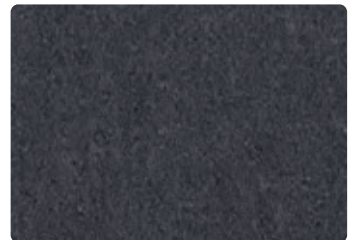
K120716 Carob



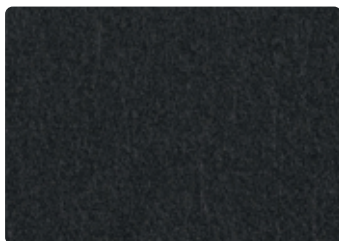
K120717 Pewter



K120718 Grey



K120719 Smoke



K120720 Tar



**Content**

Viscose 56%  
Flax 18%  
Acrylic 18%  
Jute 8%

**Lightfastness**

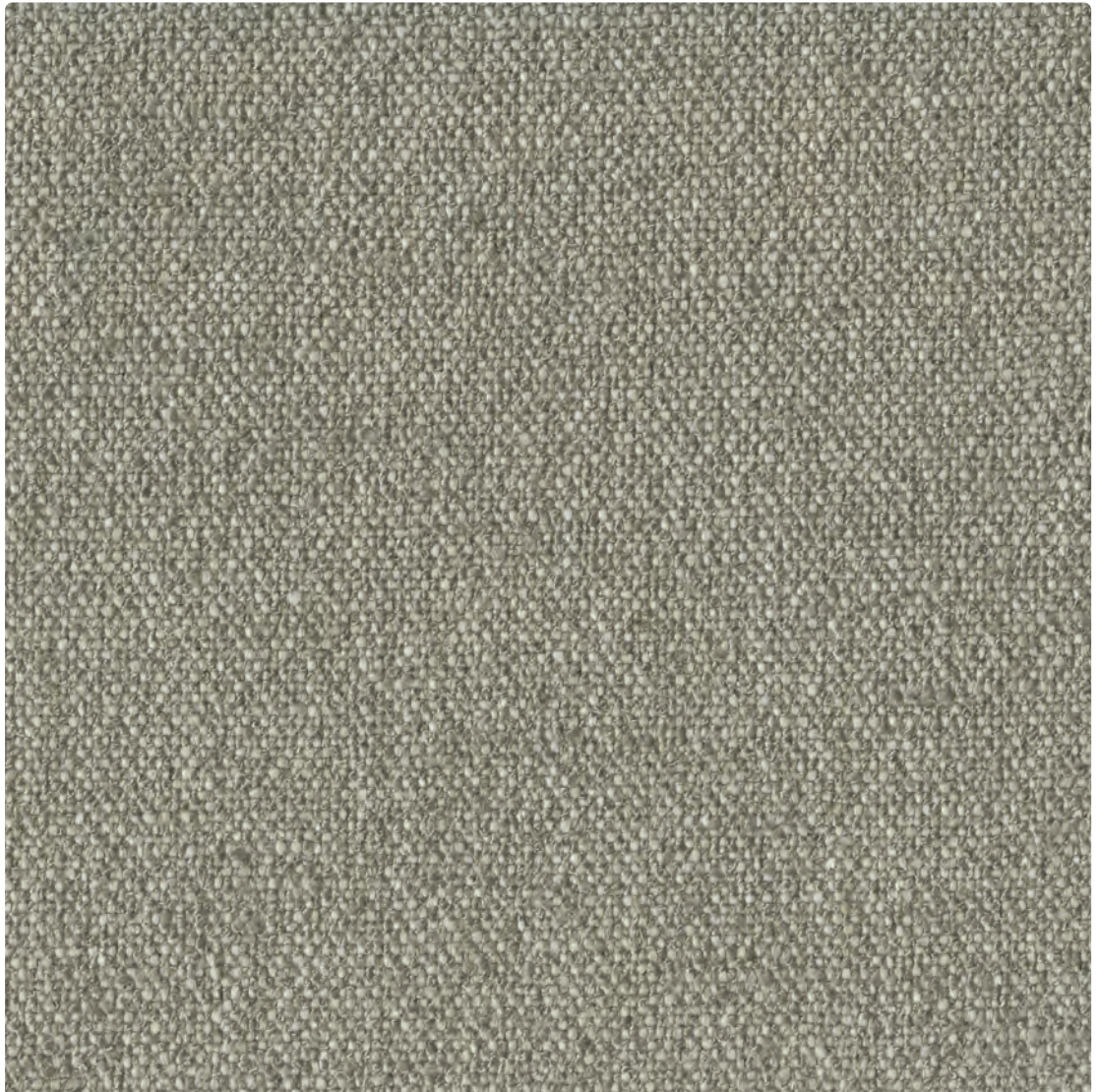
ISO 4/5

**Abrasion**

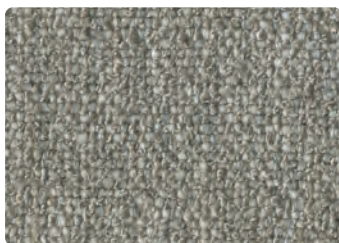
30,000 rubs  
Martindale method

**Maintenance**

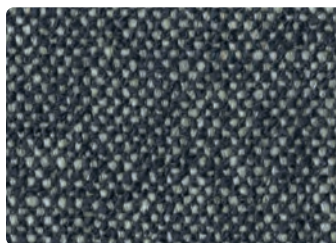
Clean with solvent-based  
cleaning agent



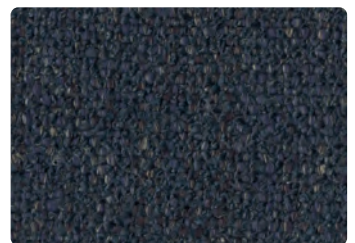
06EX Light Beige



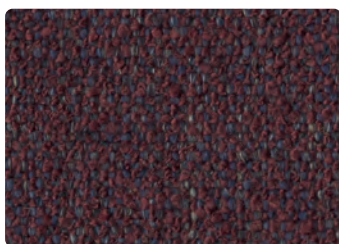
26EX Sand



21EX Blue



17EX Navy



10EX Aubergine

Please use this sample card as indicative, only. It is provided as a guide. There may be variations between this sample card and the real samples.



**Content**

Acrylic 33%  
Viscose 25%  
Wool 17%  
Polyester 14%  
Cotton 11%

**Lightfastness**

ISO 3/4

**Abrasion**

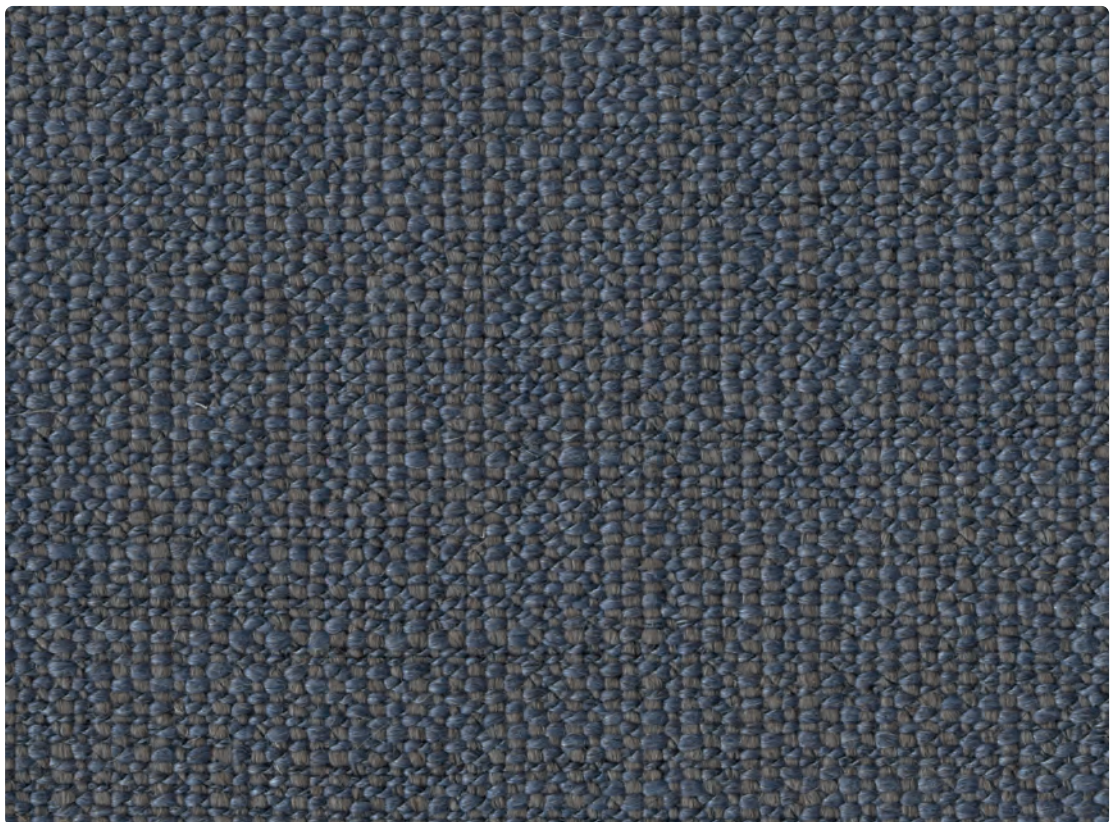
30,000 rubs  
DIN EN ISO 12947-2

**Maintenance**

Clean with solvent-based  
cleaning agent



01ESO White



81ESO Avio



**Content**

Viscose 76%  
Cotton 13%  
Flax 8%  
Nylon 3%

**Lightfastness**

ISO 4/5

**Abrasion**

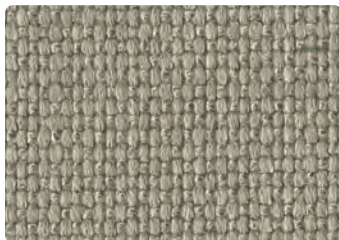
100,000 rubs  
Martindale method

**Maintenance**

Clean with solvent-based  
cleaning agent



02CI Ivory



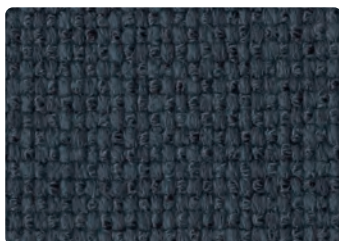
03CI Sand



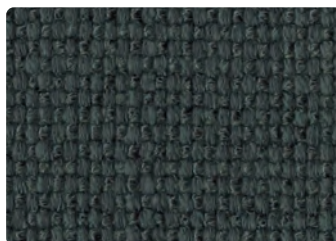
04CI Dark Brown



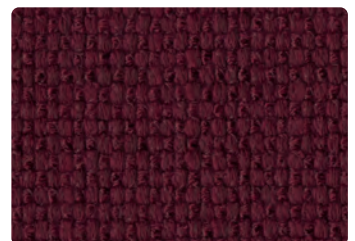
01CI Steel



06CI Teal



05CI Alp Green



09CI Bordeaux



08CI Ginger



07CI Lemon Curry

Please use this sample card as indicative, only. It is provided as a guide. There may be variations between this sample card and the real samples.



**Content**

Pile:  
Alpaca 60%  
New Wool 27%  
Nylon 13%  
Ground:  
Cotton 70%  
Polyester 19%  
Viscose 11%

**Flame Resistance**

BS 5852:2006

**Lightfastness**

ISO 4

**Abrasion**

40,000 rubs  
Martindale method

**Maintenance**

Clean with solvent-based  
cleaning agent



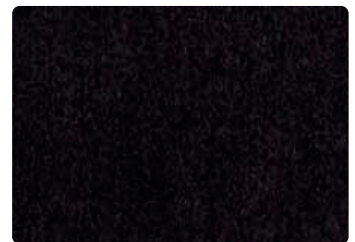
01AL Ivory



02AL Beige



1103AL Red



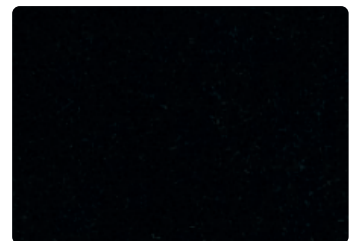
601AL Purple



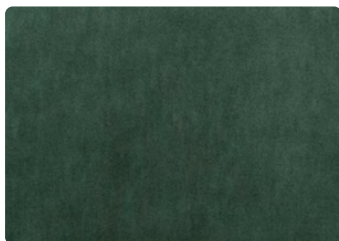
1107AL Ice



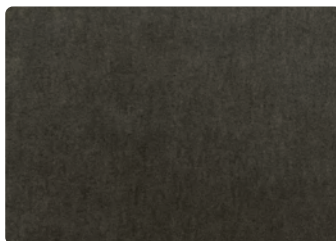
11AL Dark Grey



12AL Black



09AL Green



1114AL Taupe



**Content**

Polyester microfiber 49%  
 (30% plant based)  
 Polyester 31%  
 Polyurethane 20%

**Flame Resistance**

NFPA 260 (UFAC Class 1)  
 ASTM E-84 (Adhered) Class A  
 ASTM E-84 (Unadhered)  
 Class A  
 EN 1021 1/2  
 British Standard 5852:  
 1990 Source 5 (crib 5)

**Lightfastness**

AATCC 16E, 40 hours, Class 5

**Abrasion**

200.000 double rubs  
 Wyzenbeek method

**Maintenance**

Clean with water solvent based  
 cleaning agent



K102115 Alpine



K102124 Tapioca



K102126 Cement



K102125 Pebble



K10218 Poppy



K102139 Ruby Red



K102131 Petal



**Content**

Polyester microfiber 49%  
(30% plant based)  
Polyester 31%  
Polyurethane 20%

**Flame Resistance**

NFPA 260 (UFAC Class 1)  
ASTM E-84 (Adhered) Class A  
ASTM E-84 (Unadhered)  
Class A  
EN 1021 1/2  
British Standard 5852:  
1990 Source 5 (crib 5)

**Lightfastness**

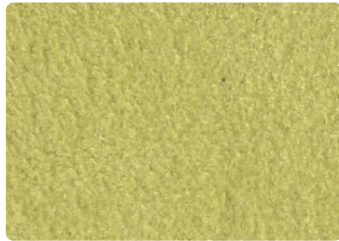
AATCC 16E, 40 hours, Class 5

**Abrasion**

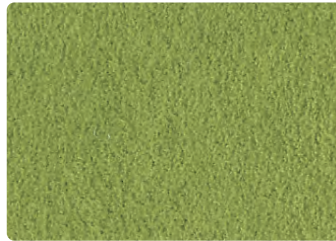
200.000 double rubs  
Wyzenbeek method

**Maintenance**

Clean with water solvent based  
cleaning agent



K102128 Ray



K102118 Kiwi



K102136 Avocado



K102134 Tinted Gold



K102141 Tamarind



K102140 Plum



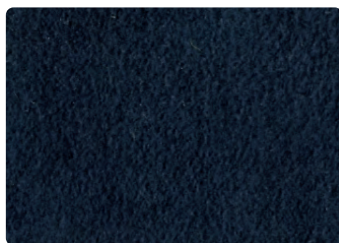
K102132 Vermillion



K102137 Cerulean



K102113 Placid



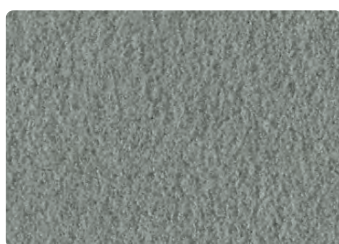
K102114 Midnight



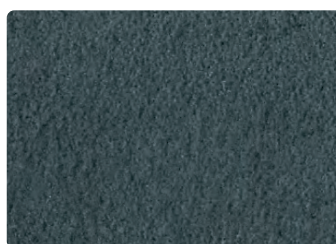
K102129 Mink



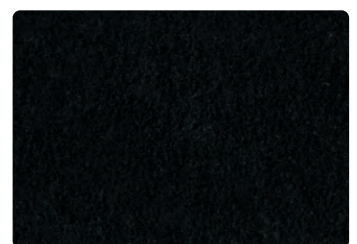
K102133 Chinchilla



K102120 Silver



K102121 Flannel



K102122 Black Onyx



**Content**

Viscose 42%  
 Flax 34%  
 Acetate 20%  
 Nylon 2%  
 Polyester 2%

**Lightfastness**

ISO 4/5

**Abrasion**

90,000 rubs  
 Martindale method

**Maintenance**

Clean with solvent-based  
 cleaning agent



02AN Natural



03AN Ivory



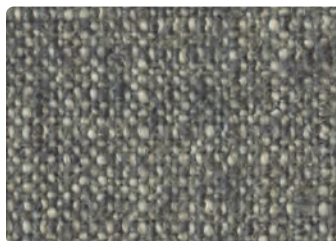
05AN Sand



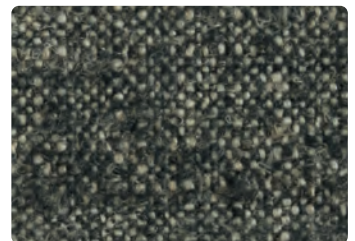
07AN Plume



08AN Pearl



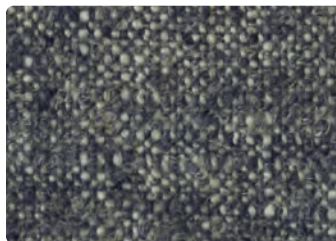
09AN Sea Water



10AN Graphite



12AN Terracotta



20AN Marine

Please use this sample card as indicative, only. It is provided as a guide. There may be variations between this sample card and the real samples.