

Content

Flax 63%
Wool 29%
Nylon 5%
Cotton 3%

Lightfastness

ISO 5

Abrasion

100,000 rubs
Martindale method

Maintenance

Clean with solvent-based
cleaning agent



02TOS Beech



16TOS Moss



17TOS Atlantic



18TOS Denim



14TOS Ice



24TOS Chestnut



22TOS Carnelian



09TOS Anthracite

Please use this sample card as indicative, only. It is provided as a guide.
There may be variations between this sample card and the real samples.

Designed by Dorothy Cosonas

Content

Wool 38%
Cotton 28%
Acrylic 28%
Polyester 6%

Flame Resistance

California Technical
Bulletin 117
NFPA 260 (UFAC Class 1)
EN1021 1/2
British Standard 5852:
1990 Source 5 (crib 5)

Lightfastness

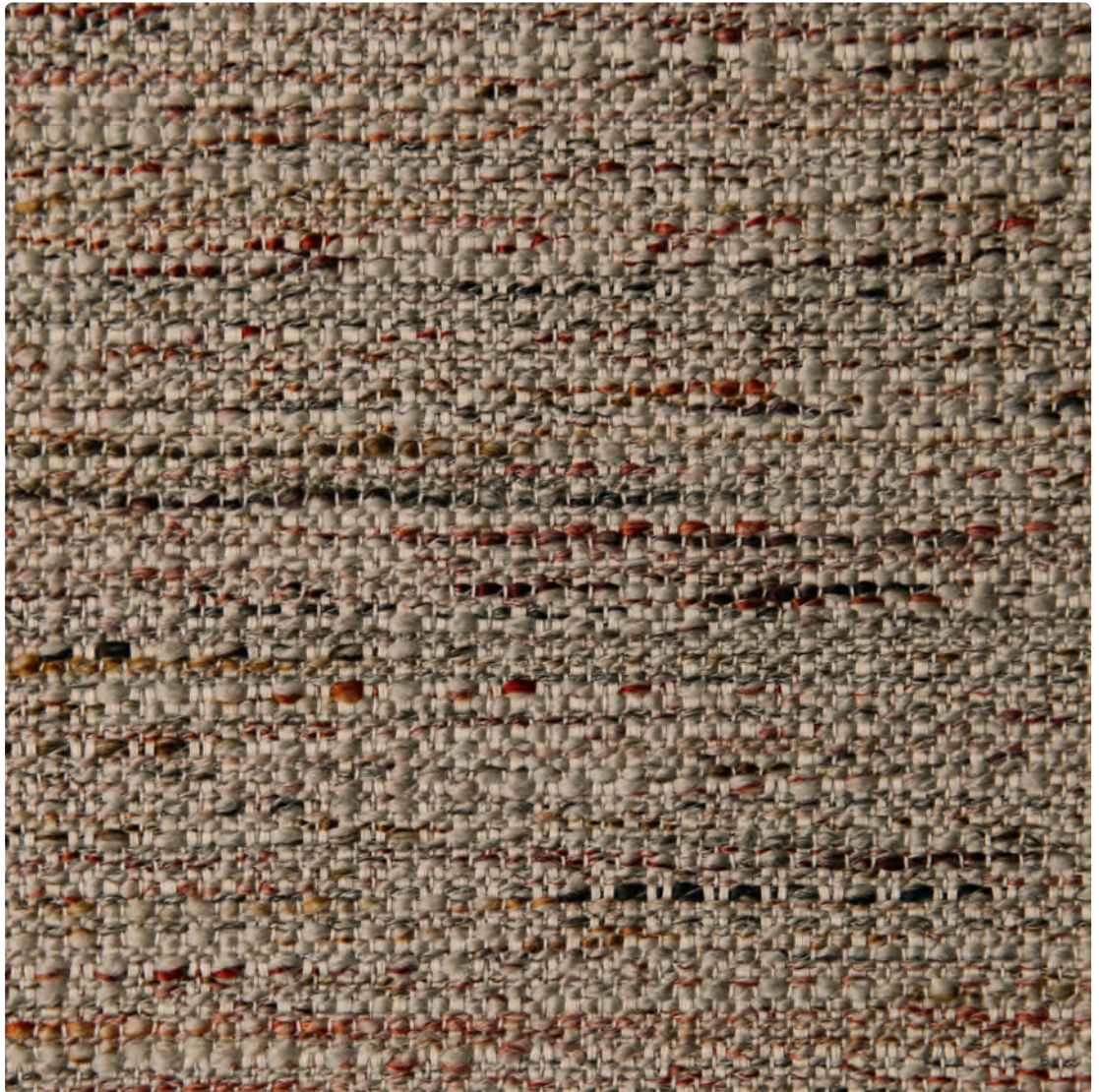
ISO 5

Abrasion

70,000 rubs
Martindale method

Maintenance

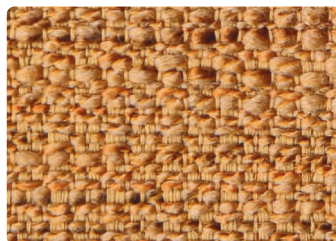
Clean with solvent-based
cleaning agent



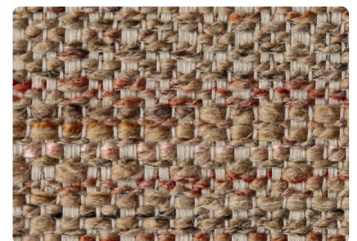
K108010 Orchard



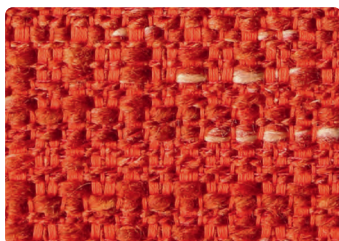
K10808 Parchment



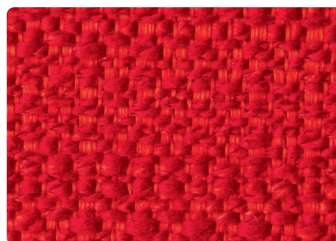
K10801 Sunflower



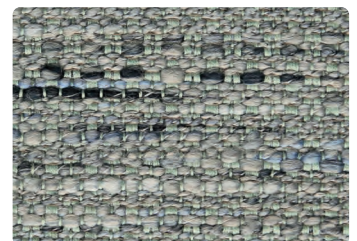
K108011 Lion



K10804 Paprika



K10805 Scarlet



K108013 Dragon

Content

Trevira CS 100%

Flame Resistance

UNI 9177 - Classe 1
California TB 117:2013
EN 1021-1&2
BS 5852-Part 0-1 (C&M)
IMO MSC 307(88)
Annex 1 Part 7+8
NF P 92-503-507 M1
DIN 4102 B1
UNI 9175 - 1.IM
NFPA 260:2019

Lightfastness

ISO 5

Abrasion

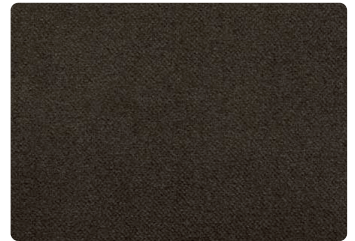
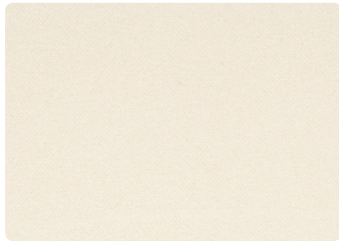
190,000 rubs
Martindale method

Maintenance

Wet cleaning warp
Shrinkage app. 2%



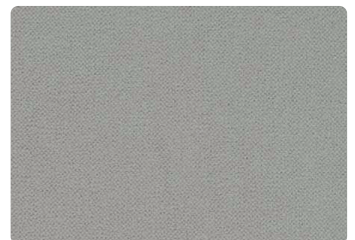
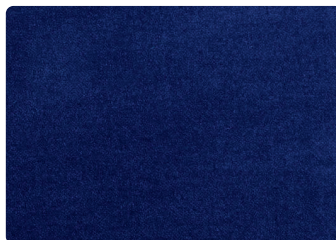
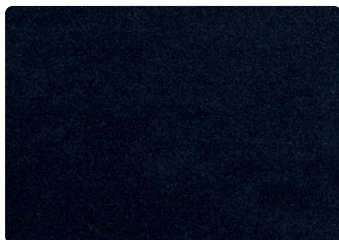
12MO Beige



13MO Ivory

10MO Mustard

11MO Mink



04MO Dark Blue

05MO Navy Blue

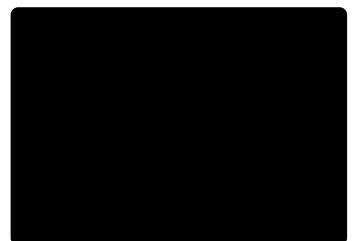
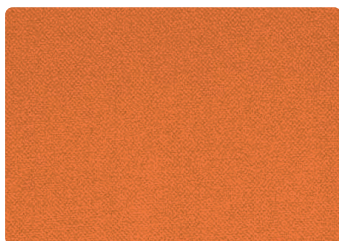
03MO Light Grey



09MO Moss

08MO Dark Red

07MO Burgundy



06MO Orange

02MO Dark Grey

01MO Black

Please use this sample card as indicative, only. It is provided as a guide. There may be variations between this sample card and the real samples.

Designed by Dorothy Cosonas

Content

Wool 38%
Cotton 28%
Acrylic 28%
Polyester 6%

Flame Resistance

California Technical
Bulletin 117
NFPA 260 (UFAC Class 1)
EN1021 1/2
British Standard 5852:
1990 Source 5 (crib 5)

Lightfastness

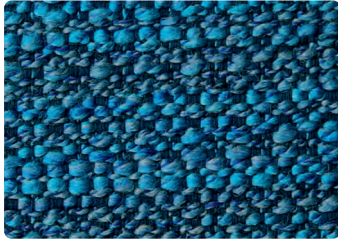
ISO 5

Abrasion

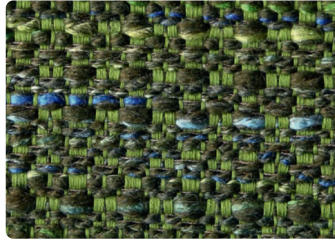
70,000 rubs
Martindale method

Maintenance

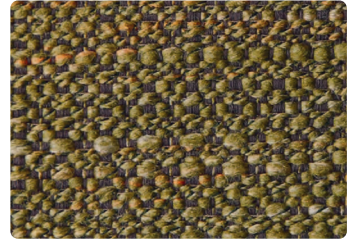
Clean with solvent-based
cleaning agent



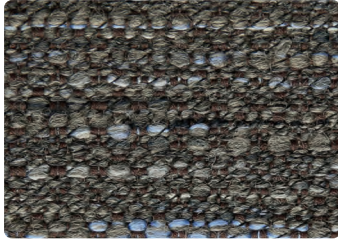
K10802 Sapphire



K108012 Palm



K10803 Spruce



K10809 Ash Gray



K10806 Aubergine



K10807 Bittersweet



K108014 Eclipse

Content

Fleece wool 96%
Nylon 4%

Lightfastness

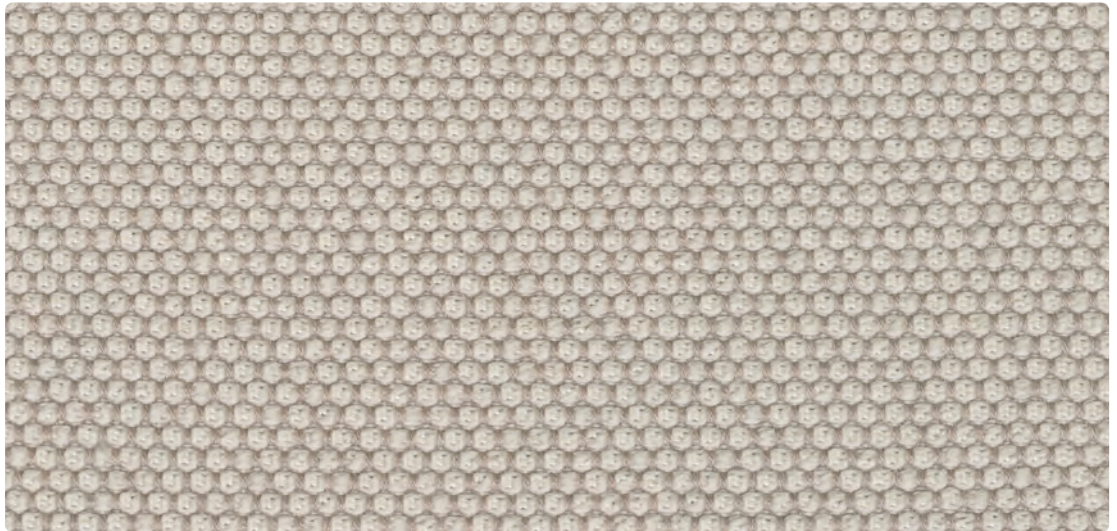
ISO 5/8

Abrasion

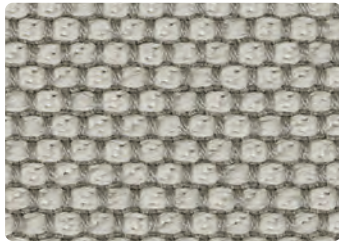
90,000 rubs
DIN EN ISO 12947-2

Maintenance

Clean with solvent-based
cleaning agent



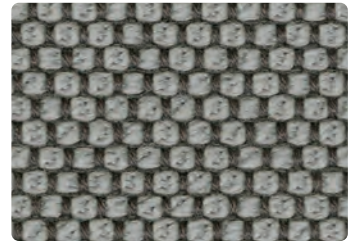
OP24 Calla



OP58 Macadamia



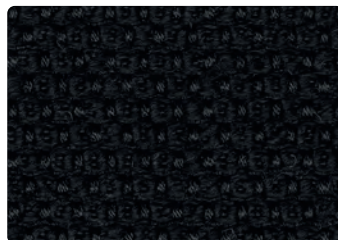
OP57 Flanell



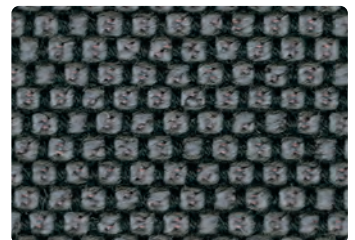
OP60 Fango



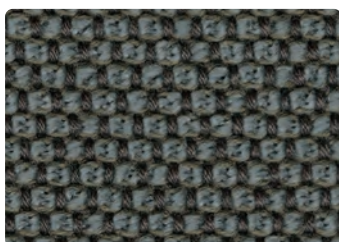
OP37 Pepper



OP18 Ebony



OP54 Carbon



OP64 Prime



OP69 Delft



OP70 Navy



OP71 Indio

Content

Acetate 57%
Polyester 37%
Viscose 6%

Lightfastness

ISO 4/5

Abrasion

32,000 rubs
Martindale method

Maintenance

Clean with solvent-based
cleaning agent



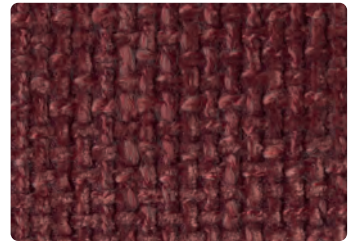
001HER Ivory



003HER Light Taupe



021HER Powder



020HER Copper



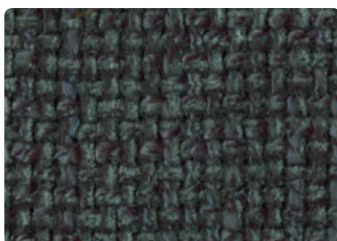
029HER Moss



031HER Gold



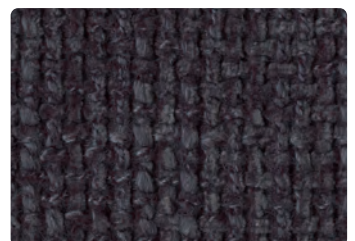
018HER Olive Green



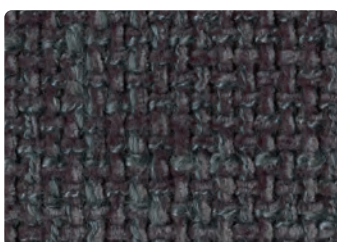
016HER Emerald Green



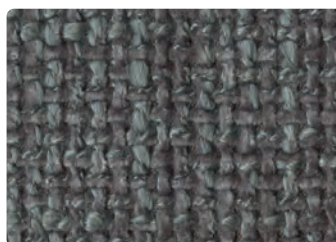
024HER Sky/Blue



023HER Night Blue



011HER Dark Grey



012HER Grey

Content

Cotton 52%
Viscose 22%
Acrylic 14%
Flax 6%
Nylon 3%
Polyester 3%

Lightfastness

ISO 4/5

Abrasion

50,000 rubs
Martindale method

Maintenance

Clean with solvent-based
cleaning agent



04HL Ivory



05HL Silver



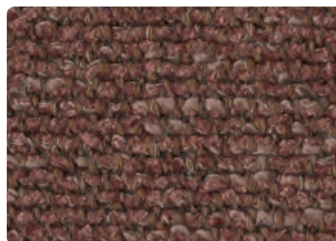
15HL Grey



07HL Dark Grey



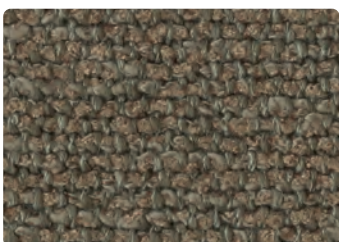
13HL Brown/White



12HL Red Brick



03HL Green/White



01HL Olive

Please use this sample card as indicative, only. It is provided as a guide.
There may be variations between this sample card and the real samples.



100



200



227



224



890



810



850



220



153



116



126



840



723



733



750



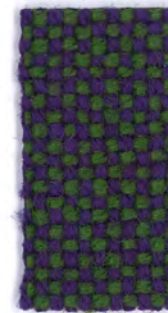
376



368



130



968



702



764



754



270



350



370



390



773



753



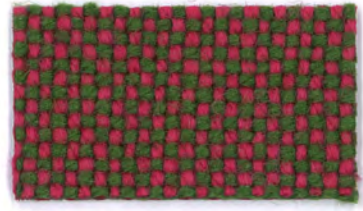
763



573



563



660



944



960



980



907



694



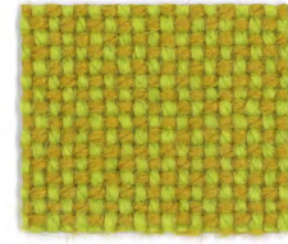
687



674



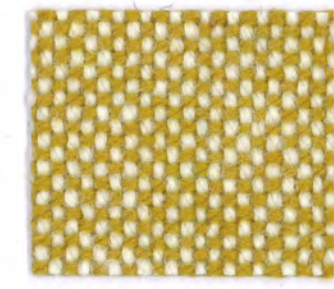
590



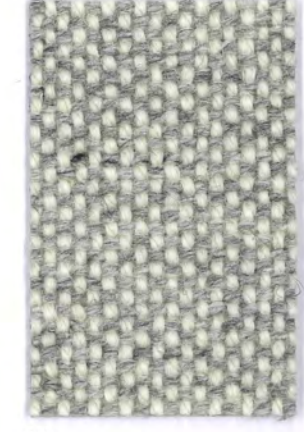
420



457



407



110



547



526



657



680



103



113



123



190



600



596



166



180



173



143



980



907



944



960



563



573



660



674



694



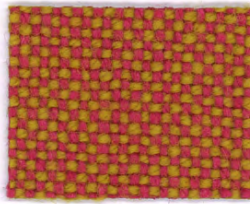
687



590



547



526



657



680



103



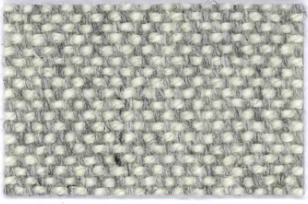
113



123



190



110



407



457



420



600



596



166



180



173



143



756



742



712



686



782



944



984



791



846



856



793



886



876



893



936



922



826



836



956



966

Divina 3



684



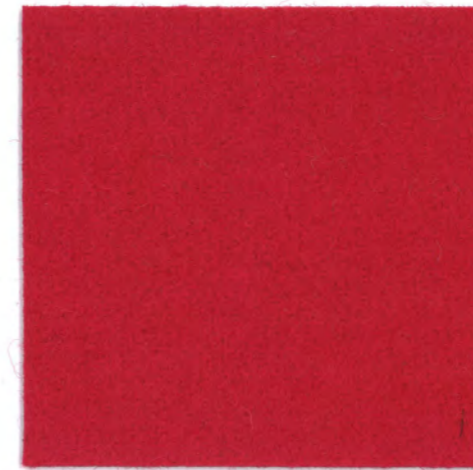
691



171



173



636



376



676



191



154



696



692



384



181



426



623



626



356



393



236



562



662



666



224



334



246



462



542



652



671



106



346



444



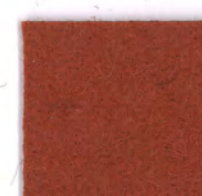
526



536



584



552

Content

New wool 95%
Polyamide 5%

Flame Resistance

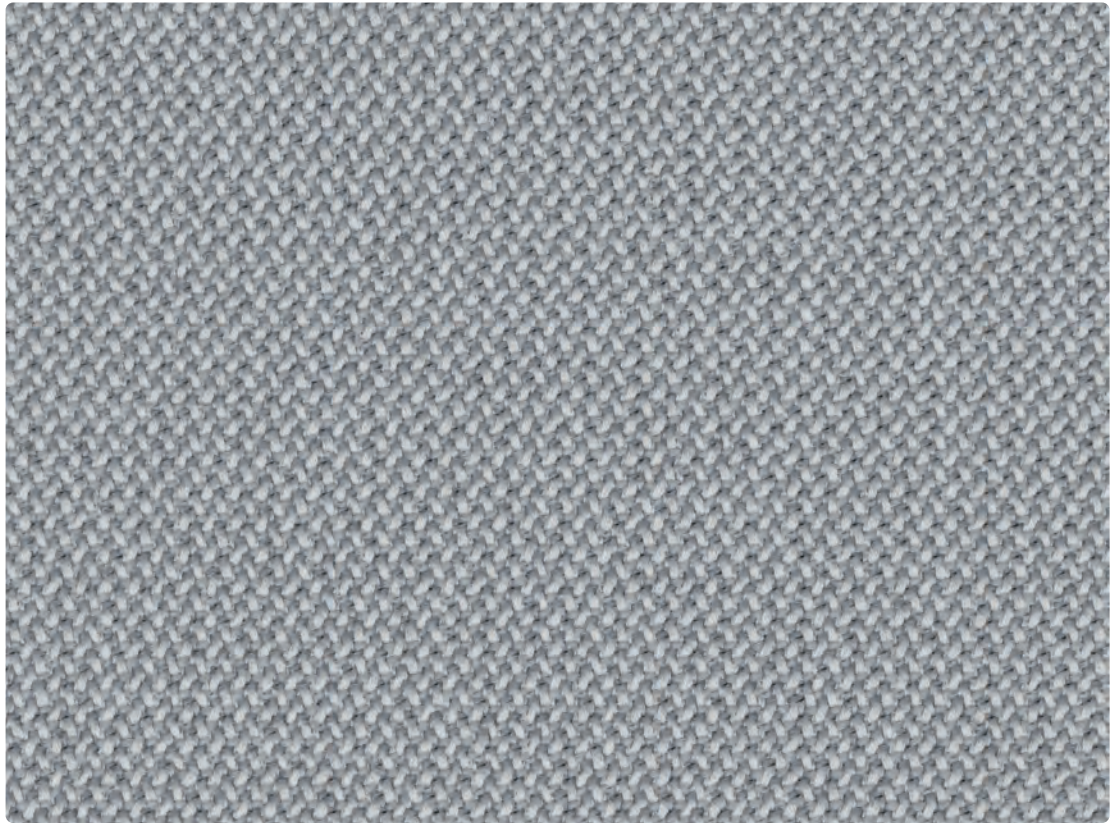
FAR 25.853 (12 sec. vertical)
CAL TB 117-2013
DIN 4102-1 B2
EN 13501-1
EN 1021-1 and -2
BS 5852:2006 (part 1)
BS 5852:2006 (part 2) Crib 5
BKZ: 5.3 SN 198898
UNI 9175 (1 IM)
IMO: 2014/90/EU/Marine
Equipment Directive

Lightfastness

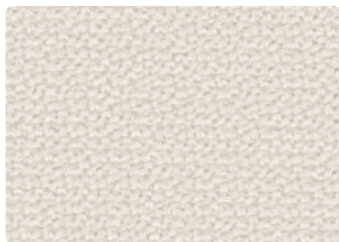
Min 5-8 EN ISO 105-B02

Maintenance

Dry clean



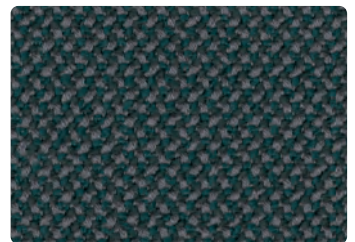
RCR95 Chalk



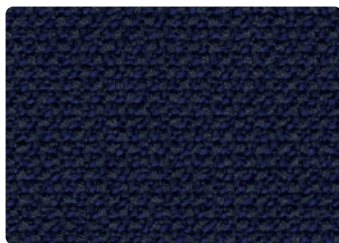
RCR02 Snow



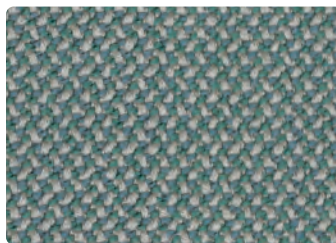
RCR34 Calla



RCR82 Jaspis



RCR90 Navy



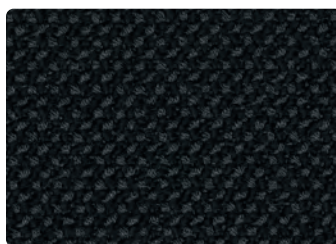
RCR86 Lake



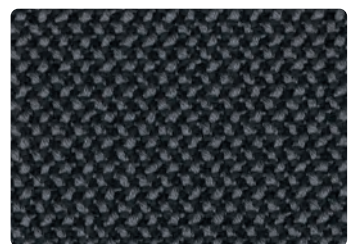
RCR97 Zinn



RCR16 Pepper



RCR08 Black



RCR25 Asphalt

Content

Cotton 38%
 Acrylic 24%
 Viscose 18%
 Wool 12%
 Nylon 2%

Flame Resistance

BS 5852:2006

Lightfastness

ISO 4/5

Abrasion

62,000 rubs
 Martindale method

Maintenance

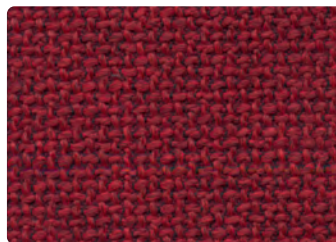
Clean with solvent-based
 cleaning agent



01WE White



19WE Light Brown



18WE Red



14WE Blue



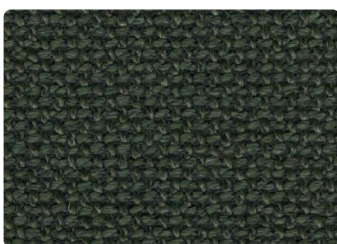
13WE Dark Grey



10WE Grey



03WE Light Grey



12WE Green



04WE Sand

Please use this sample card as indicative, only. It is provided as a guide. There may be variations between this sample card and the real samples.

Content

Acrylic 43%
Cotton 25%
Polyester 15%
Viscose 14%
Wool 3%

Flame Resistance

California Technical
Bulletin 117-2013
British Standard 5852: 1979
Part1 (cigarette & match)

Lightfastness

ISO 3/5

Abrasion

25,000 rubs
Martindale method

Maintenance

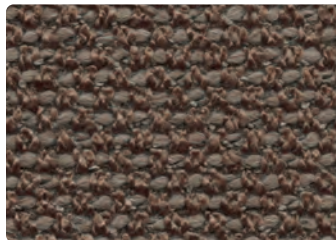
Dry clean, only



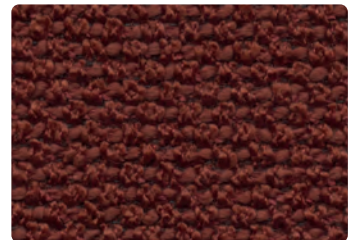
06PE Ivory



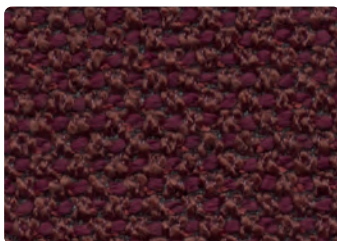
05PE Sand



04PE Taupe



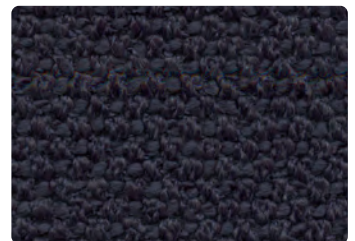
02PE Brick



01PE Burgundy



03PE Lagoon



08PE Blue



09PE Dark Grey



07PE Light Grey

Please use this sample card as indicative, only. It is provided as a guide. There may be variations between this sample card and the real samples.

Content

Cotton 20%
Polyester 80%

Lightfastness

ISO 5

Abrasion

100,000 rubs
Martindale method

Maintenance

Clean with solvent-based
cleaning agent



07H Ice



05H Olive



02H Grey



04H Moss



03H Dark Blue



06H Light Grey



01H Black

Please use this sample card as indicative, only. It is provided as a guide. There may be variations between this sample card and the real samples.

Content

Acrylic 45%
Cotton 19%
Flax 12%
Polyester 12%
Viscose 12%

Lightfastness

ISO 4/5

Abrasion

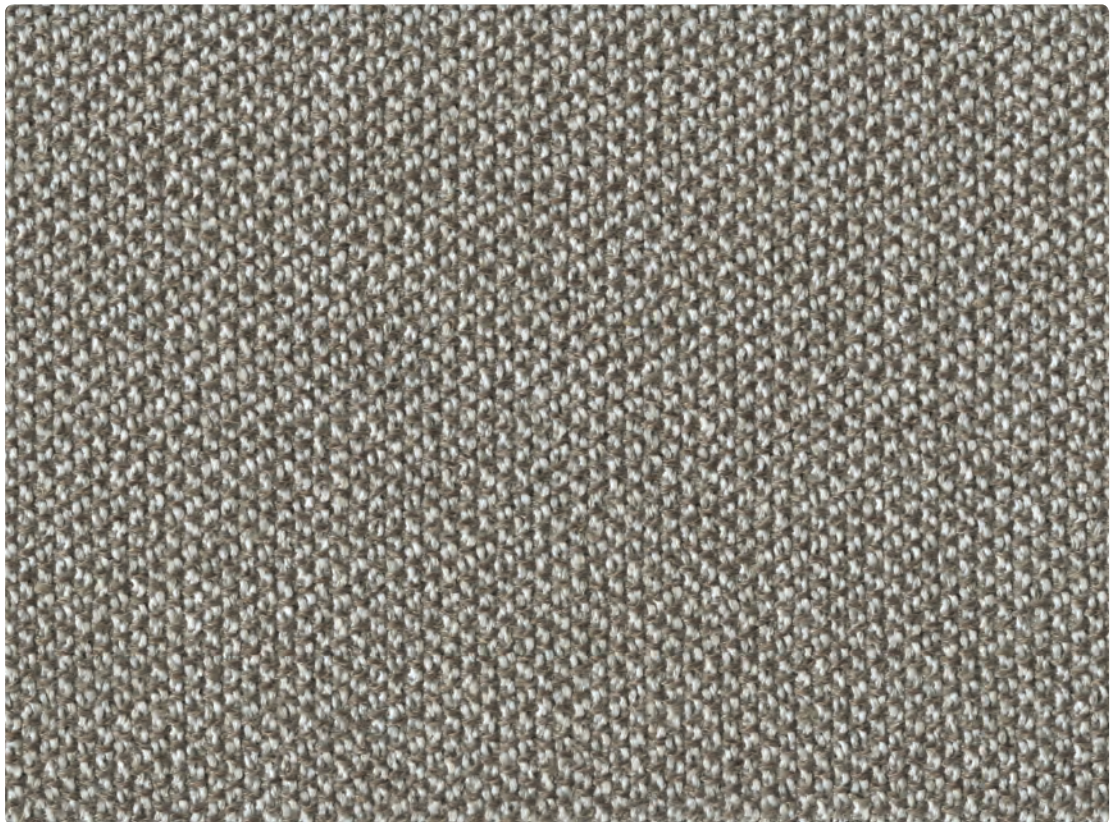
30,000 rubs
Martindale method

Maintenance

Clean with solvent-based
cleaning agent



01FED White



03FED Sand

Content

Acrylic 47%
Cotton 26%
Flax 9%
Polyester 9%
Viscose 9%

Lightfastness

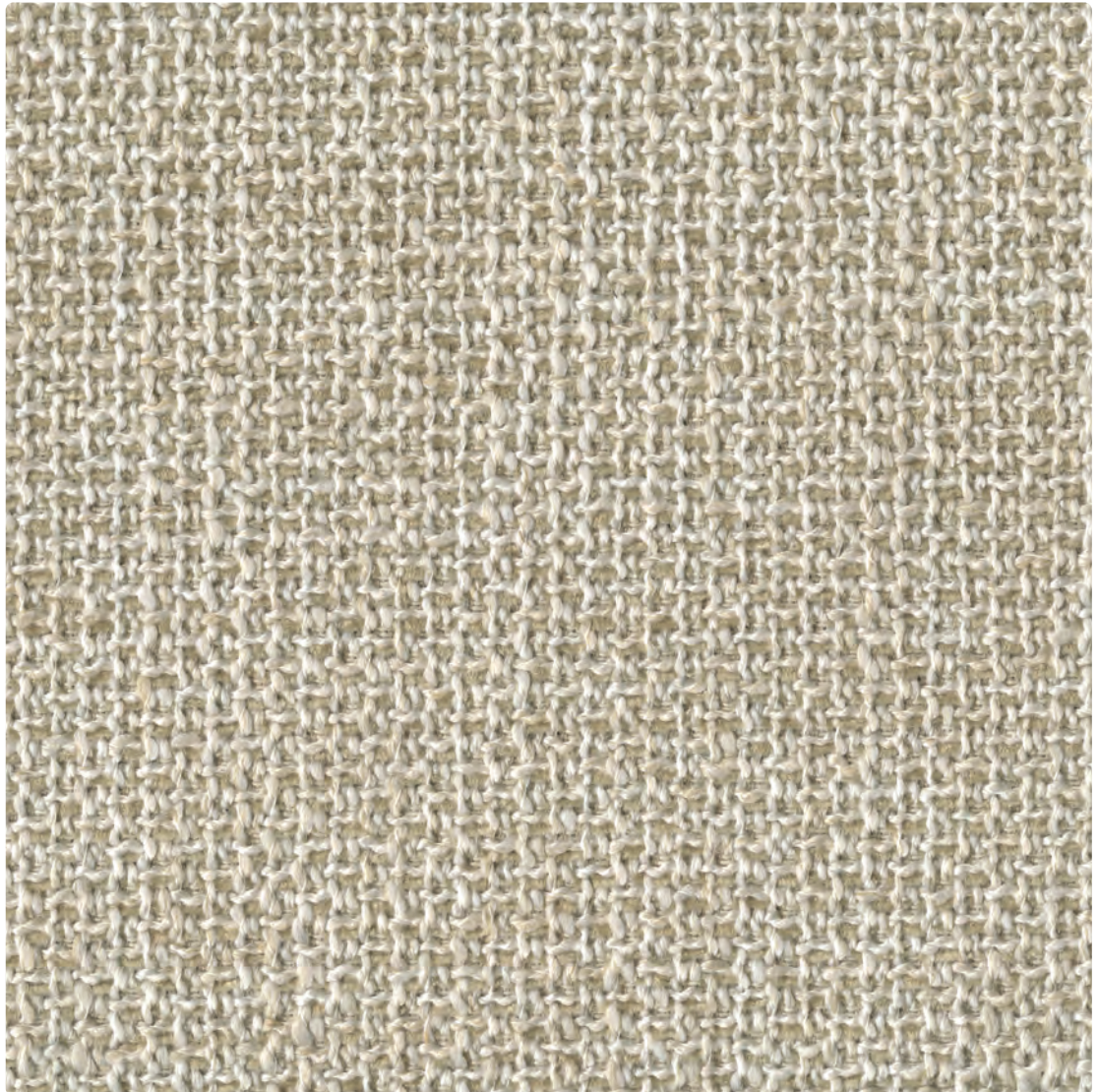
ISO 4/5

Abrasion

30,000 rubs
Martindale method

Maintenance

Clean with solvent-based
cleaning agent



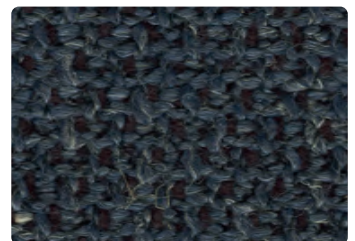
65CRO Ivory



35CRO Brown



52CRO Bluish Green



14CRO Blue

Tonus 4



424



440



125



454



605



554



224



244



464



130



608



100



135



654



207



474



610



609



374



664



684



634



636



129



631



754



508



210



132



764



216



690



854



613



240



128



615



364



964



131



934



974



914



619



954



118



394

Content

Wool 100%

Flame Resistance

NFPA 260 (UFAC Class 1)

EN1021 1/2

British Standard 5852:

1990 Source 5 (crib 5)

Lightfastness

ISO 4

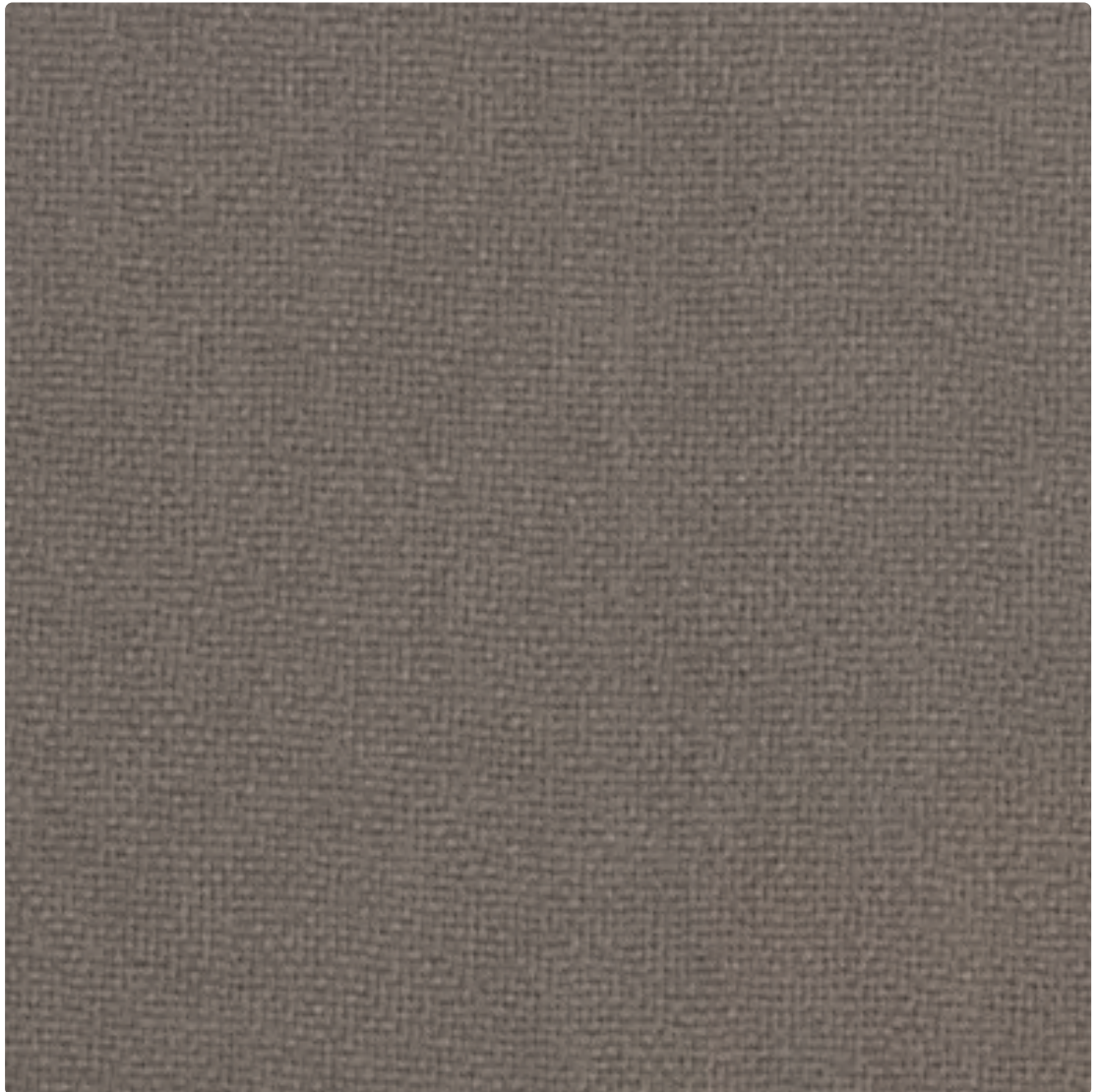
Abrasion

40,000 rubs

Martindale method

Maintenance

Clean with solvent-based
cleaning agent



K120613 Putty



K12061 Buff



K12062 Stucco



K12063 Celery



K12064 Lime



K12065 Olive



K12066 Gold

Content

Wool 100%

Flame Resistance

NFPA 260 (UFAC Class 1)

EN1021 1/2

British Standard 5852:

1990 Source 5 (crib 5)

Lightfastness

ISO 4

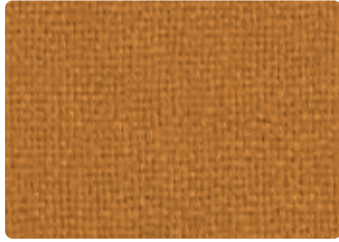
Abrasion

40,000 rubs

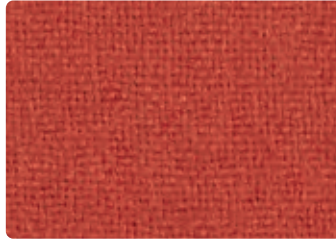
Martindale method

Maintenance

Clean with solvent-based
cleaning agent



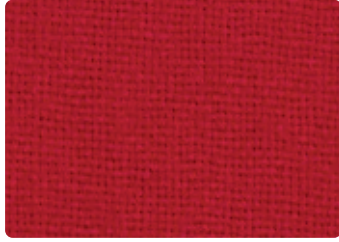
K12067 Orange



K12068 Melon



K12069 Magenta



K120610 Red



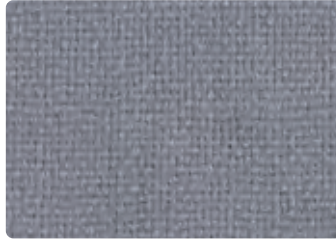
K120611 Admiral



K120612 Navy



K120616 Black



K120614 Silver



K120615 Charcoal

Content

Wool 100%

Flame Resistance

NFPA 260 (UFAC Class 1)

EN1021 1/2

British Standard 5852:

1990 Source 5 (crib 5)

Lightfastness

ISO 4

Abrasion

40,000 rubs

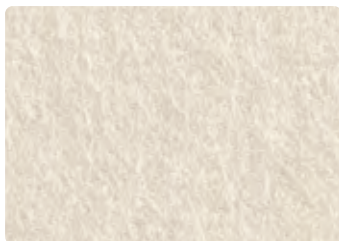
Martindale method

Maintenance

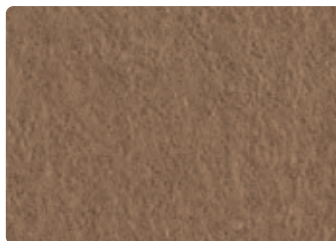
Clean with solvent-based
cleaning agent



K120710 Grape



K12071 Ivory



K12072 Tan



K12073 Apple



K12074 Green



K12075 Canary



K12076 Tangerine

Content

Wool 100%

Flame Resistance

NFPA 260 (UFAC Class 1)
EN1021 1/2
British Standard 5852:
1990 Source 5 (crib 5)

Lightfastness

ISO 4

Abrasion

40,000 rubs
Martindale method

Maintenance

Clean with solvent-based
cleaning agent



K12077 Poppy



K12078 Pink



K12079 Rouge



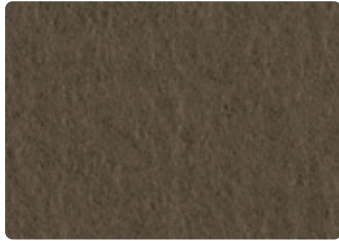
K120711 Cadet



K120712 Baltic



K120713 Blue



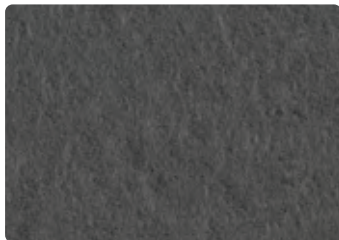
K120714 Toast



K120715 Mocha



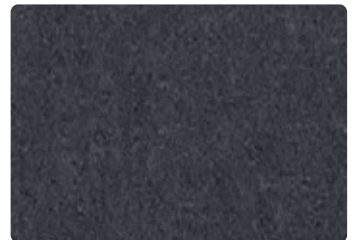
K120716 Carob



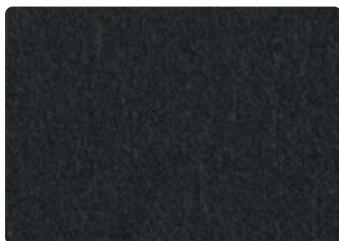
K120717 Pewter



K120718 Grey



K120719 Smoke



K120720 Tar

Content

Viscose 56%
Flax 18%
Acrylic 18%
Jute 8%

Lightfastness

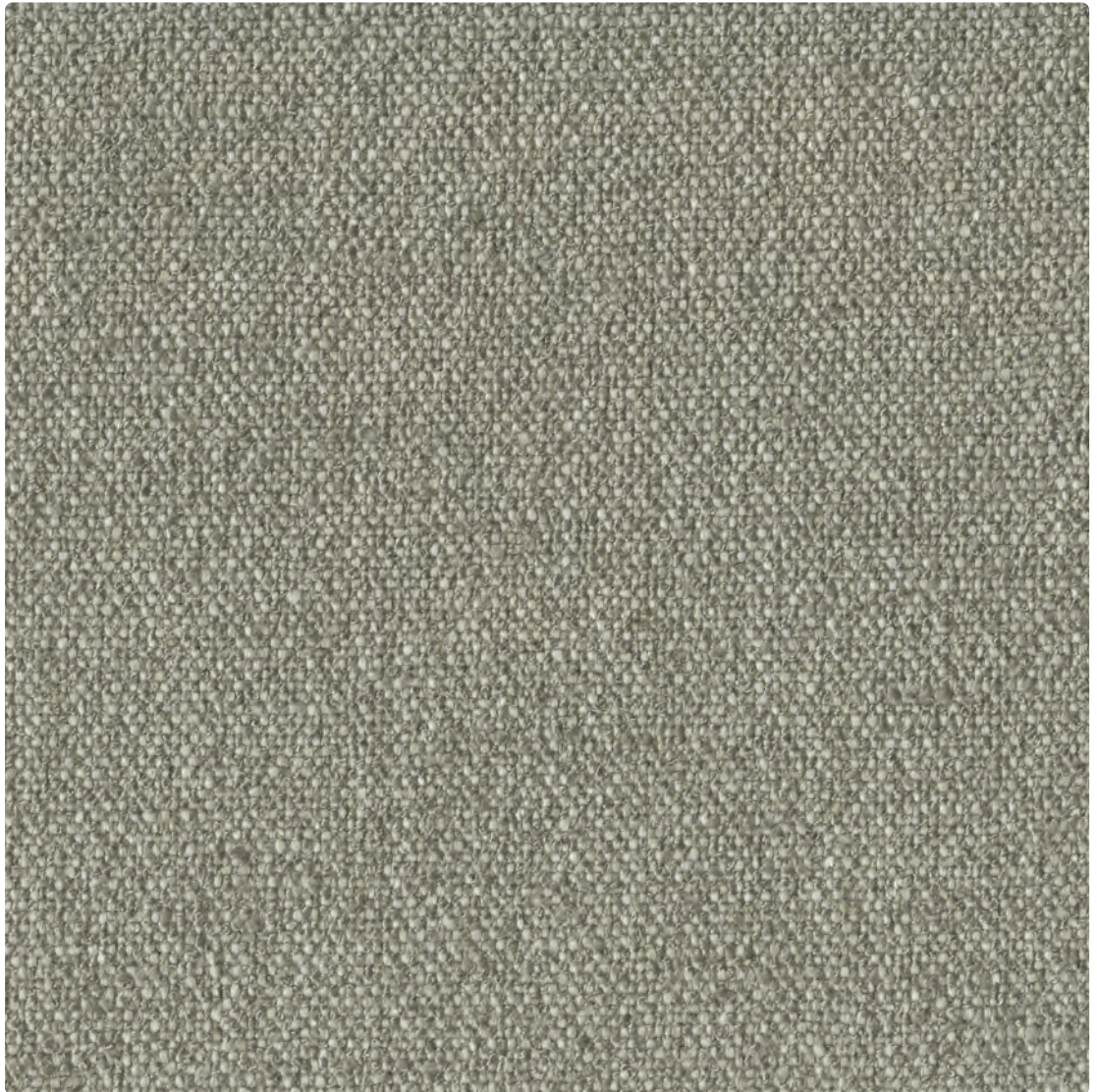
ISO 4/5

Abrasion

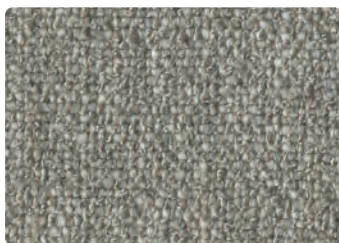
30,000 rubs
Martindale method

Maintenance

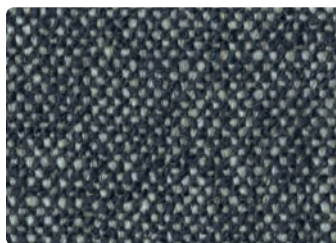
Clean with solvent-based
cleaning agent



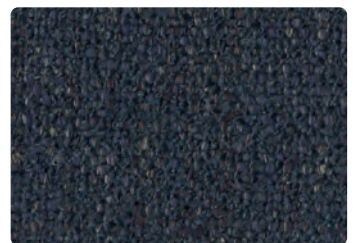
06EX Light Beige



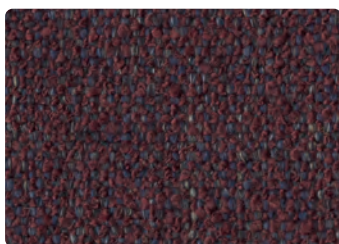
26EX Sand



21EX Blue



17EX Navy



10EX Aubergine

Please use this sample card as indicative, only. It is provided as a guide.
There may be variations between this sample card and the real samples.

Content

Acrylic 33%
Viscose 25%
Wool 17%
Polyester 14%
Cotton 11%

Lightfastness

ISO 3/4

Abrasion

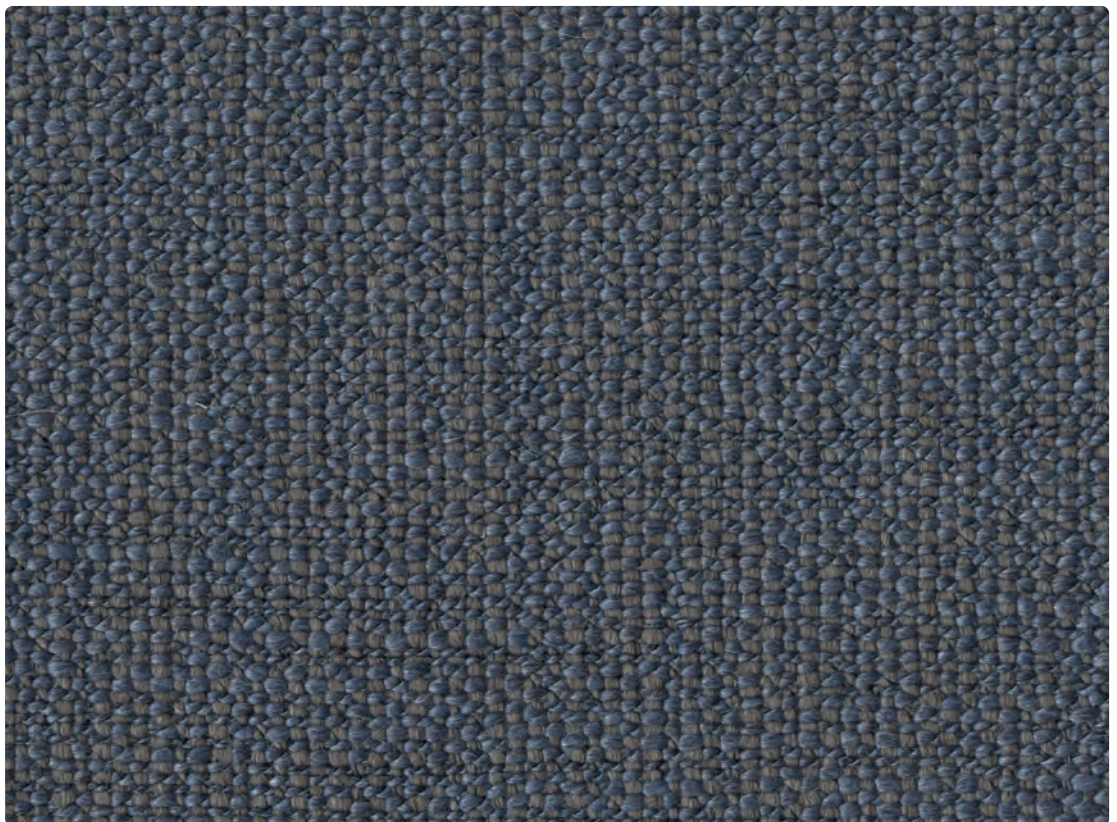
30,000 rubs
DIN EN ISO 12947-2

Maintenance

Clean with solvent-based
cleaning agent



01ESO White



81ESO Avio

Content

Acrylic 33%
Viscose 32%
Wool 16%
Polyester 8%
Cotton 7%
Flax 4%

Flame Resistance

California Technical
Bulletin 117-2013
British Standard 5852: 1979
Part 1 (cigarette & match)

Abrasion

50,000 rubs
Martindale method

Maintenance

Dry clean, only



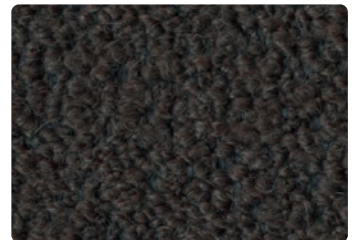
01CU White



02CU Ivory



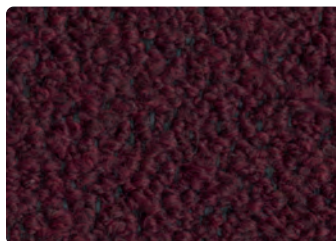
05CU Mustard



04CU Brown



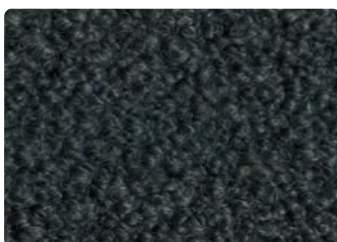
06CU Green



08CU Burgundy



07CU Blue



03CU Dark Grey

Content

Viscose 76%
Cotton 13%
Flax 8%
Nylon 3%

Lightfastness

ISO 4/5

Abrasion

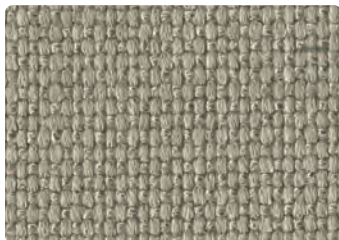
100,000 rubs
Martindale method

Maintenance

Clean with solvent-based
cleaning agent



02CI Ivory



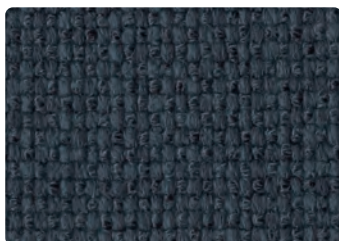
03CI Sand



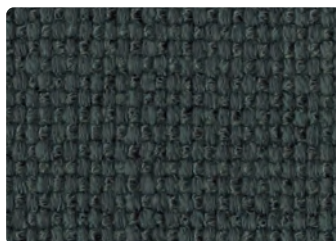
04CI Dark Brown



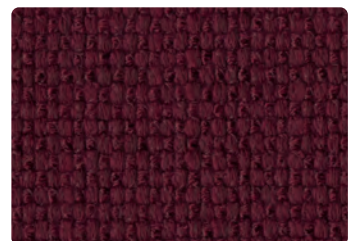
01CI Steel



06CI Teal



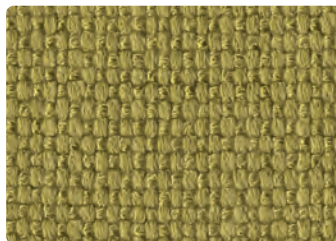
05CI Alp Green



09CI Bordeaux



08CI Ginger



07CI Lemon Curry

Please use this sample card as indicative, only. It is provided as a guide. There may be variations between this sample card and the real samples.

Content

Pile:
Alpaca 60%
New Wool 27%
Nylon 13%
Ground:
Cotton 70%
Polyester 19%
Viscose 11%

Flame Resistance

BS 5852:2006

Lightfastness

ISO 4

Abrasion

40,000 rubs
Martindale method

Maintenance

Clean with solvent-based
cleaning agent



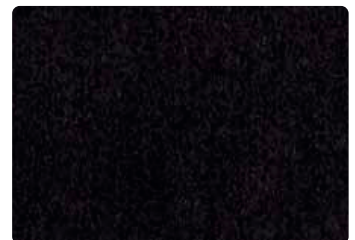
01AL Ivory



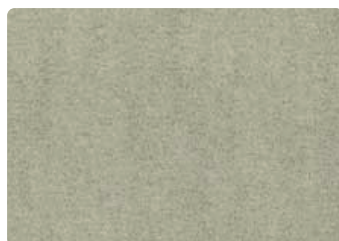
02AL Beige



1103AL Red



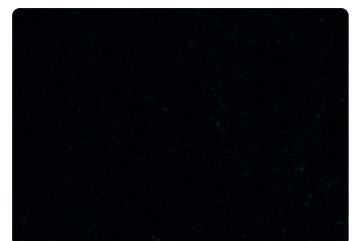
601AL Purple



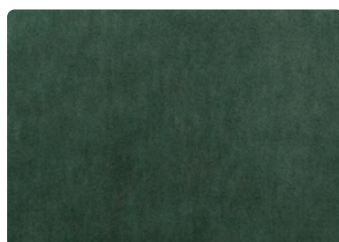
1107AL Ice



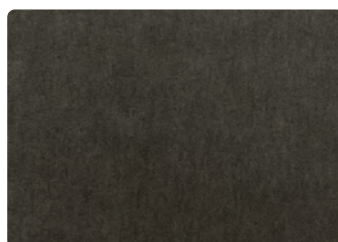
11AL Dark Grey



12AL Black



09AL Green



1114AL Taupe

KnollTextiles Archival Collection, 1970

Content

Ground: cotton 54%
Pile: mohair 46%

Flame Resistance

California Technical
Bulletin 117
NFPA 701 Test 1 (1996)
with topical treatment
EN1021 1/2
British Standard 5852:
1990 Source 5 (crib 5)

Lightfastness

ISO 5

Abrasion

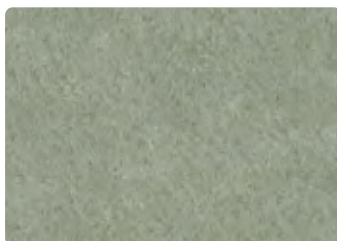
20,000 rubs
Martindale method

Maintenance

Clean with solvent-based
cleaning agent



K78487 Swan



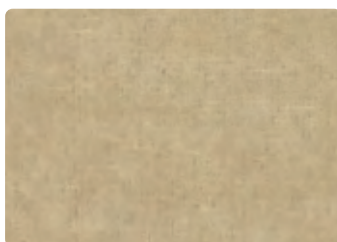
K78472 Celadon



K78471 Silver



K78449 Sage



K78470 Palomino



K78460 Sandstone



K78485 Penny

KnollTextiles Archival Collection, 1970

Content

Ground: cotton 54%
Pile: mohair 46%

Flame Resistance

California Technical
Bulletin 117
NFPA 701 Test 1 (1996)
with topical treatment
EN1021 1/2
British Standard 5852:
1990 Source 5 (crib 5)

Lightfastness

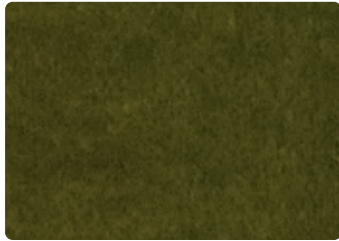
ISO 5

Abrasion

20,000 rubs
Martindale method

Maintenance

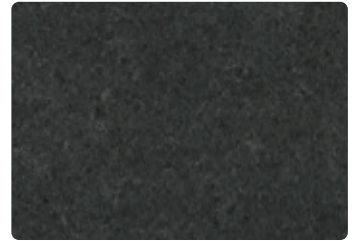
Clean with solvent-based
cleaning agent



K78474 Moss



K78463 Marina



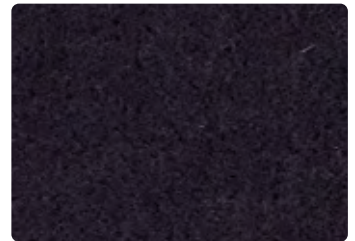
K78448 Graphite



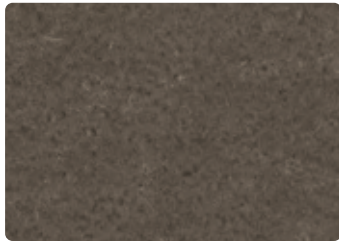
K78476 Tomato



K78483 Bayberry



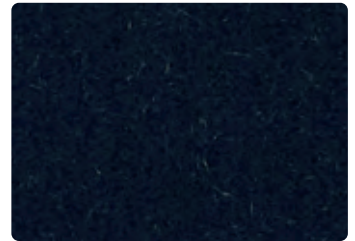
K78482 Currant



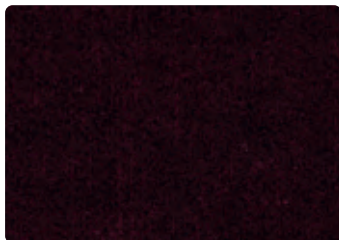
K78462 Clove



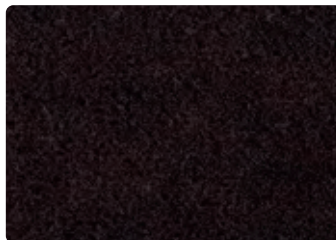
K78481 Teal



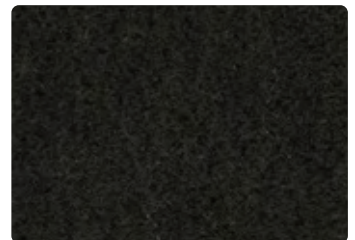
K78484 Aviator



K78434 Wine



K78479 Espresso



K78486 Truffle



K78466 Ebony

Content

Wool 86%
Rayon 14%

Flame Resistance

California Technical
Bulletin 117
EN1021 1/2
British Standard 5852:
1990 Source 5 (crib 5)

Lightfastness

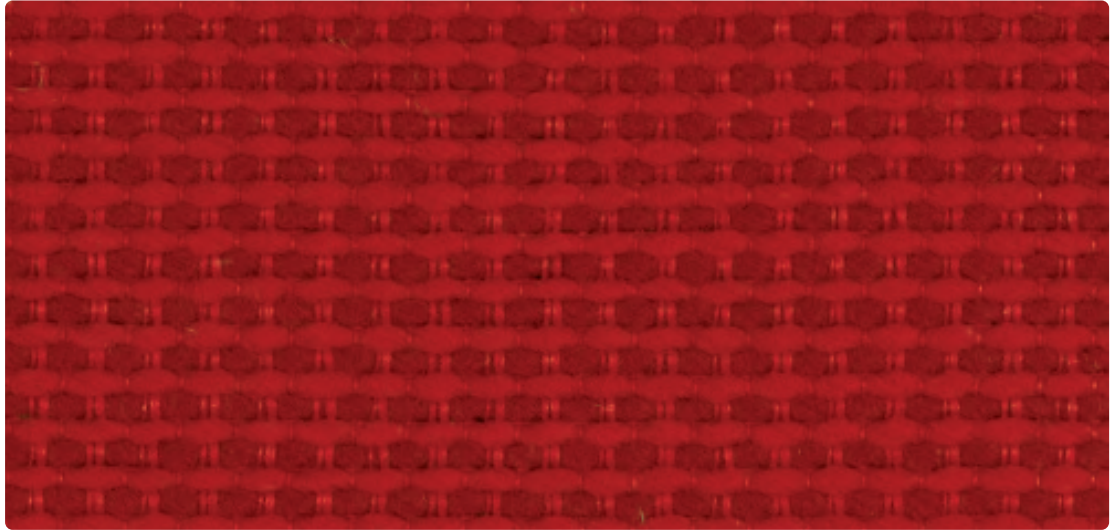
ISO 5

Abrasion

80,000 rubs
Martindale method

Maintenance

Clean with solvent-based
cleaning agent



H80019 Fire Red



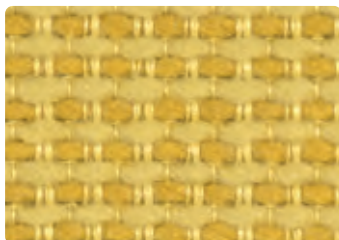
H80040 Orange



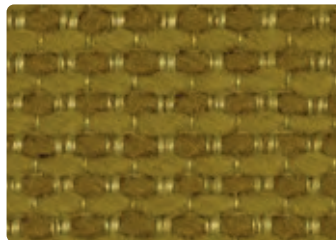
H80050 Natural



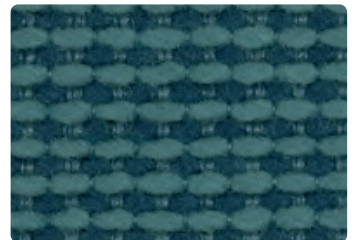
H80012 Ivory



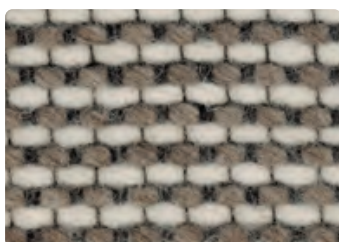
H80051 Yellow



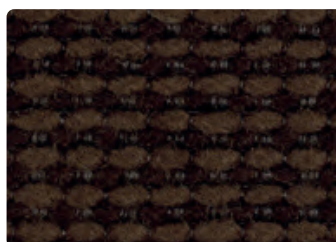
H80041 Green



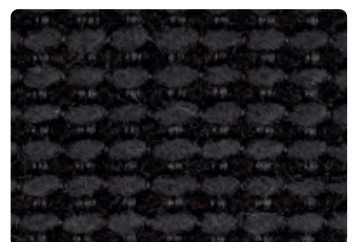
H80042 Blue



H8002 Sand



H80043 Brown



H80044 Grey



H80052 Hot Pink

Content

Polyester microfiber 49%
 (30% plant based)
 Polyester 31%
 Polyurethane 20%

Flame Resistance

NFPA 260 (UFAC Class 1)
 ASTM E-84 (Adhered) Class A
 ASTM E-84 (Unadhered)
 Class A
 EN 1021 1/2
 British Standard 5852:
 1990 Source 5 (crib 5)

Lightfastness

AATCC 16E, 40 hours, Class 5

Abrasion

200.000 double rubs
 Wyzenbeek method

Maintenance

Clean with water solvent based
 cleaning agent



K102115 Alpine



K102124 Tapioca



K102126 Cement



K102125 Pebble



K102118 Poppy



K102139 Ruby Red



K102131 Petal

Content

Polyester microfiber 49%
(30% plant based)
Polyester 31%
Polyurethane 20%

Flame Resistance

NFPA 260 (UFAC Class 1)
ASTM E-84 (Adhered) Class A
ASTM E-84 (Unadhered)
Class A
EN 1021 1/2
British Standard 5852:
1990 Source 5 (crib 5)

Lightfastness

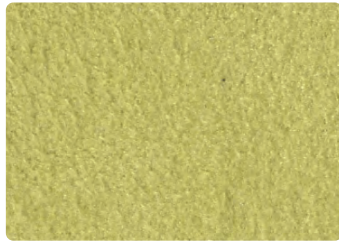
AATCC 16E, 40 hours, Class 5

Abrasion

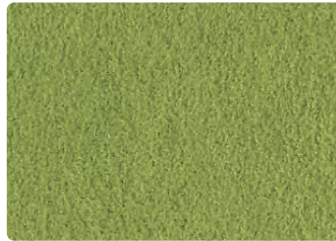
200.000 double rubs
Wyzenbeek method

Maintenance

Clean with water solvent based
cleaning agent



K102128 Ray



K102118 Kiwi



K102136 Avocado



K102134 Tinted Gold



K102141 Tamarind



K102140 Plum



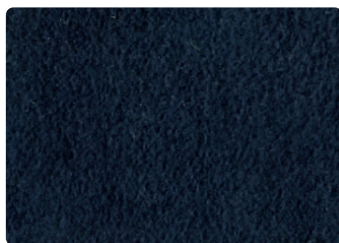
K102132 Vermillion



K102137 Cerulean



K102113 Placid



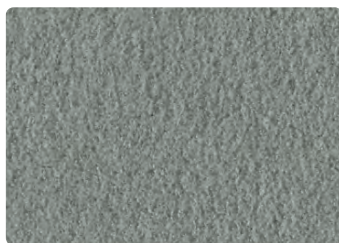
K102114 Midnight



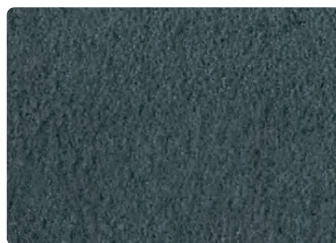
K102129 Mink



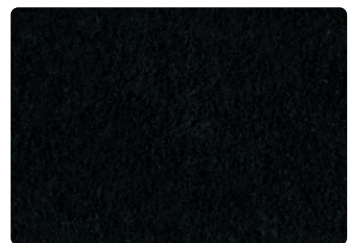
K102133 Chinchilla



K102120 Silver



K102121 Flannel



K102122 Black Onyx

Content

Viscose 42%
 Flax 34%
 Acetate 20%
 Nylon 2%
 Polyester 2%

Lightfastness

ISO 4/5

Abrasion

90,000 rubs
 Martindale method

Maintenance

Clean with solvent-based
 cleaning agent



02AN Natural



03AN Ivory



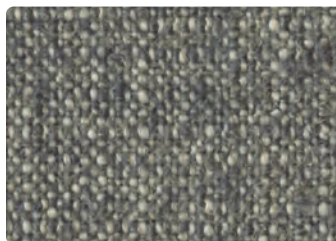
05AN Sand



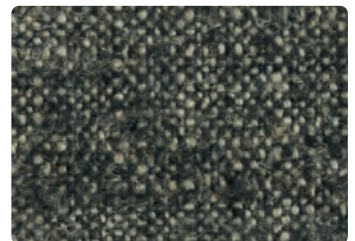
07AN Plume



08AN Pearl



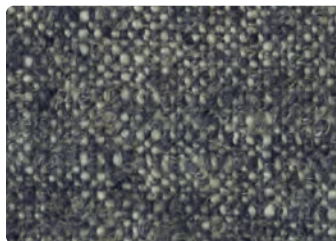
09AN Sea Water



10AN Graphite



12AN Terracotta



20AN Marine

Please use this sample card as indicative, only. It is provided as a guide. There may be variations between this sample card and the real samples.